

CHUKAN BUTSU LTD

Introduction

Since its foundation in 1928, We have been committed to advancing its expertise in sourcing and supplying intermediates for colorants, pharmaceuticals, agrochemicals and specialized fine chemicals.

Now, we efficiently deliver these through a global network wherever and whenever customers need them.

| | |
|--------------------------------|---|
| Established | 1928 Established as Horibata Co 1990 Success to Chukan Butsu Ltd. |
| Business activities | Domestic sales, Import & export of chemicals |
| Head Office | Doshomachi, Chuo-Ku, Osaka, Japan |
| Tokyo Office | Uchikanda, Chiyoda-ku, Tokyo, Japan |
| Yashiro Distribution Center | Kato-City, Hyogo, Japan (Own Warehouse) |
| Overseas offices | Chukan Butsu Exim Pvt.Ltd. (India) CBL Shanghai Representative Office (China) CBL Belarus Representative Office (Belarus) |



Support Your Business

We support your business with Japanese pharmaceutical company.

Pharmaceutical registration and Documentation support.

Registration and management of APIs.

Our Specialist staff assists with the registration process.

Japan DMF
Registration

In Country
Care-taker

As a domestic caretaker, we handles MF registration and management, pharmaceutical affairs correspondence.

And Supporting customers from the review stage to post-approval in a way that meets Japanese standards.

Generic
APIs

Accreditation of
Foreign
Manufacturers



Rx & OTC Switches

Prescription to Over-the-Counter Switches

Find New Business, Rx to OTC Switches

*Looking for overseas partners / suppliers to Japanese Market
in the field of Rx to OTC Switches.*

Supply Chain Mapping

*We offer stable “Supply Chain Mapping” to Japanese company
through Osaka and Tokyo (Japan) , Shanghai (China) ,
Vadodara (India) and Belarus office.*

Raw material and Intermediate supply

*Also, Comprehensive establishment of starting material to
formulation is one important mission for us.*

*We also highlight raw material and intermediate supply
for Pharmaceutical company*

Our Stock Point in Japan

We have Distribution center near Kobe Port.

It can stock not only API, but also DG and others.

From the middle of Japan, we arrange delivery on time.

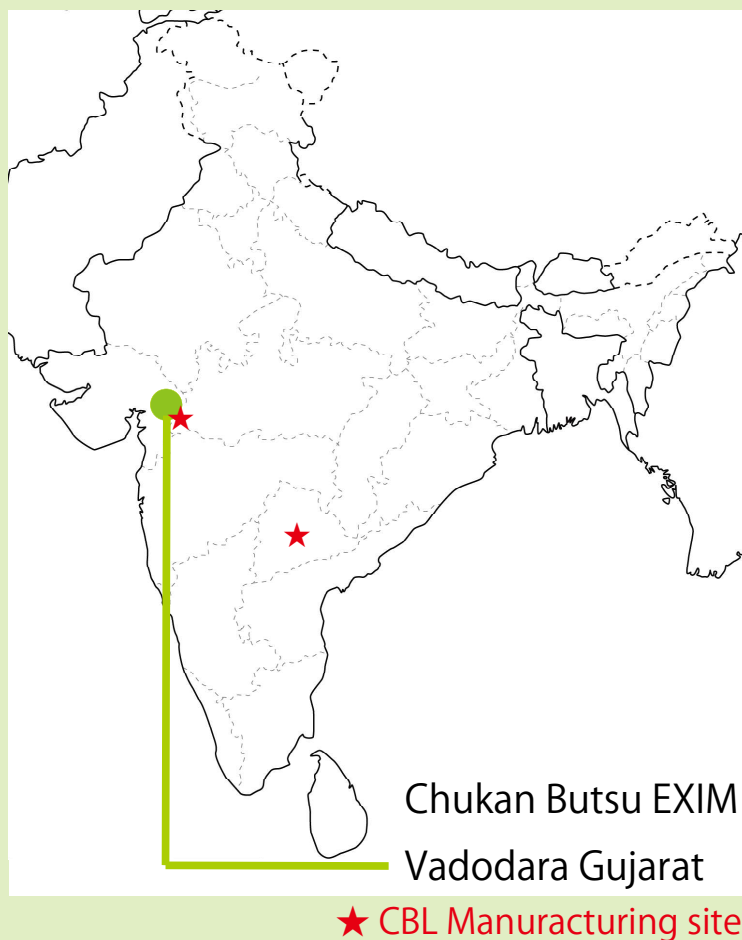


Yashiro Distribution Center

Exporting from India

We support exporting Indian Partner company's material.

Chukan Butsu EXIM (India) will help your procurement.



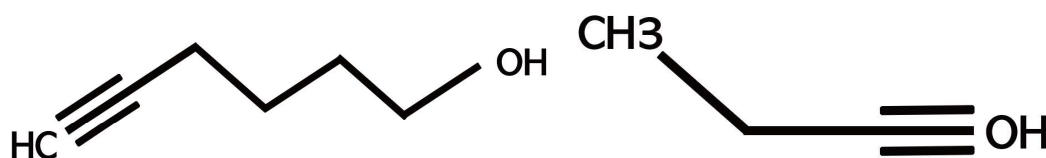
Our Indian local subsidiary has Chemical trading functions and responsible for marketing and logistics management.

As a base for Asia and other global markets, it provides Chemical raw material supply services.

Unique Mateirals Supply

We support exporting Indian Partner company's unique mateiral.

Below materials are example which we export from India.

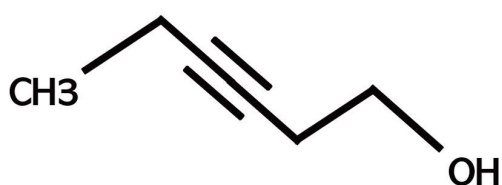


5-Hexyn-1-ol

CAS:928-90-5

4-Pentyn-1-ol

CAS : 5390-04-5



3-Hexyn-1-ol

CAS : 1002-28-4



Sodium Butyn

CAS: 1001-57-6

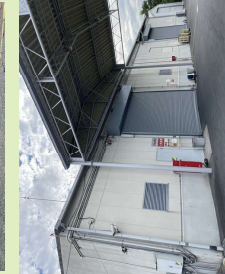
Chukan Butsu EXIM support your EXport and IMport.



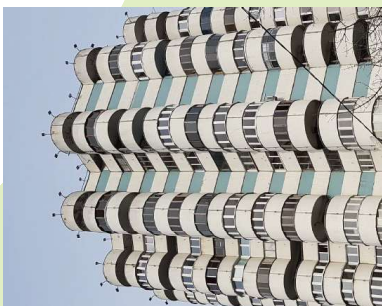
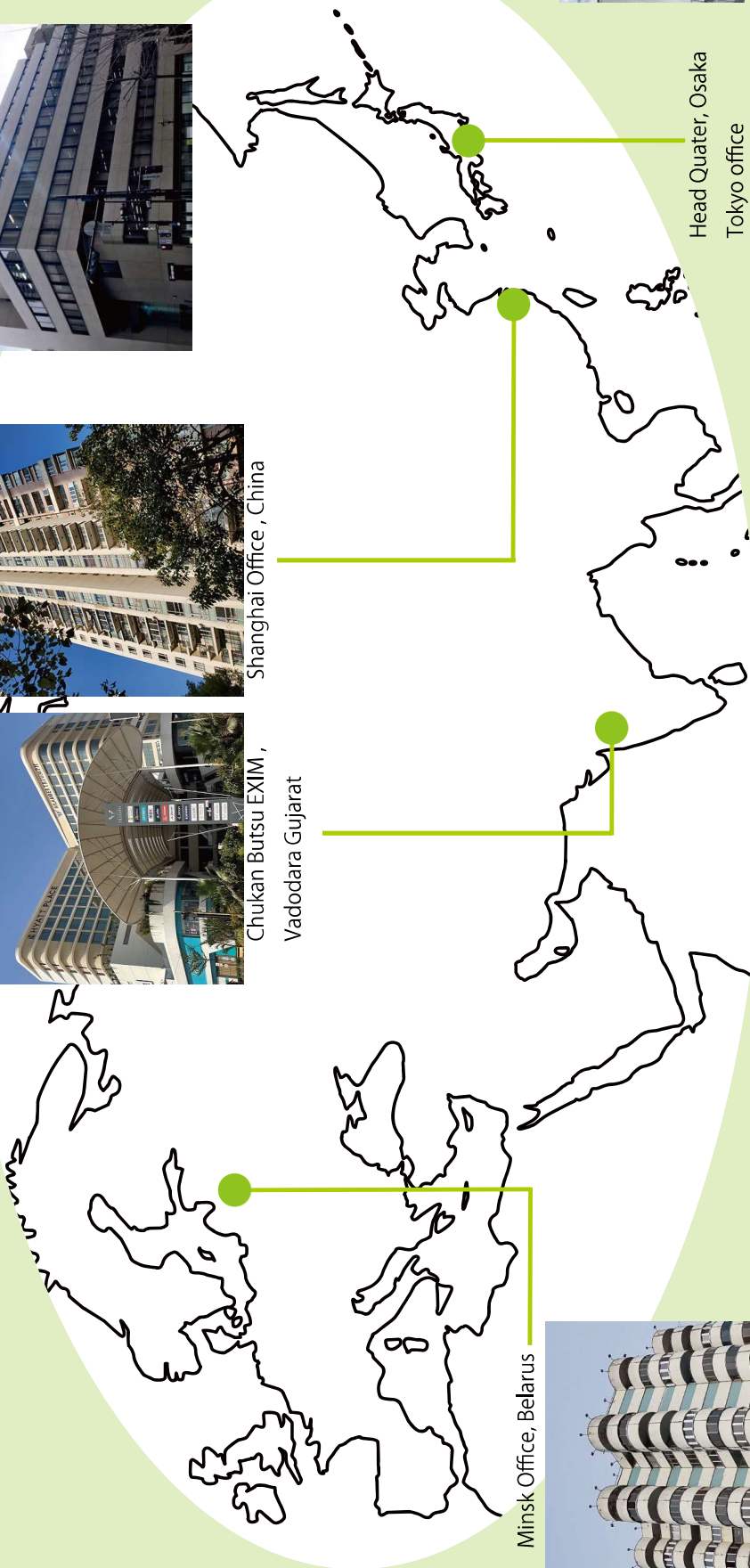
Shanghai Office, China



Chukan Butsu EXIM,
Vadodra Gujarat



Head Quater, Osaka
Tokyo office
Yashiro Distribution Center



Minsk Office, Belarus

