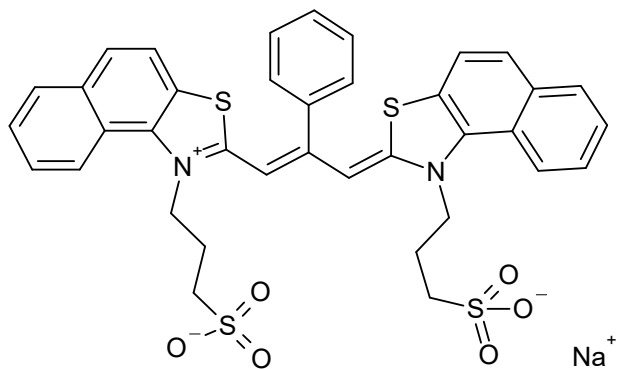


S11975

CAS #



Absorption

	Methanol	
602	nm	145000 M-1 cm-1

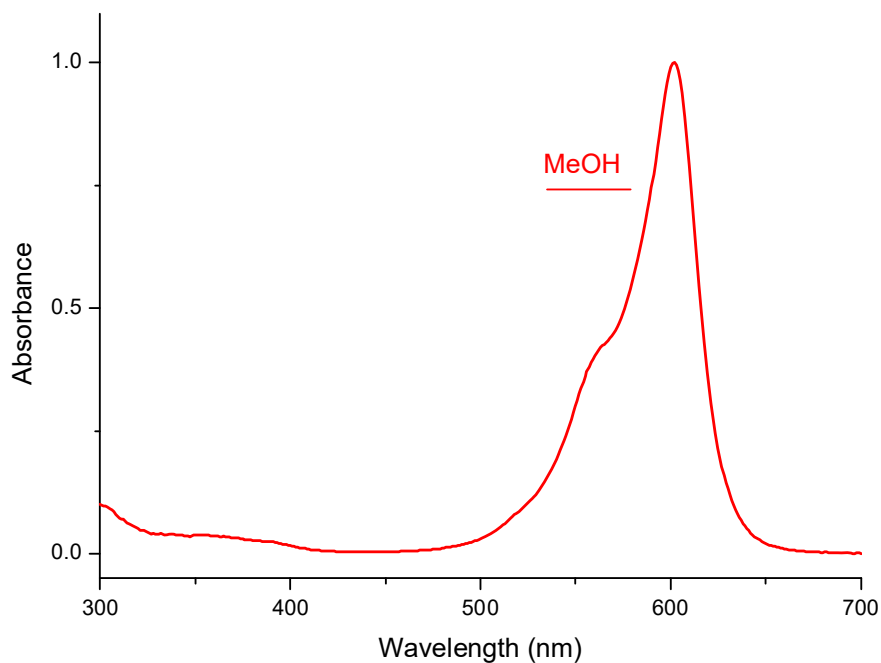
	nm	M-1 cm-1
--	----	----------

Emission

nm

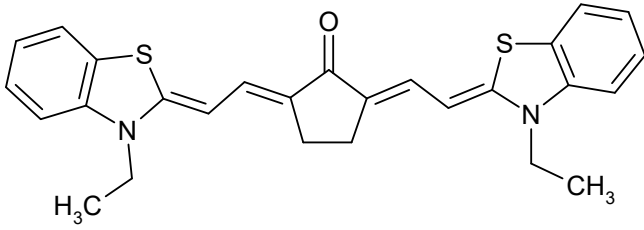
C₃₇H₃₁N₂NaO₆S₄

750.9152



S01109

CAS #
27714-24-5



Absorption

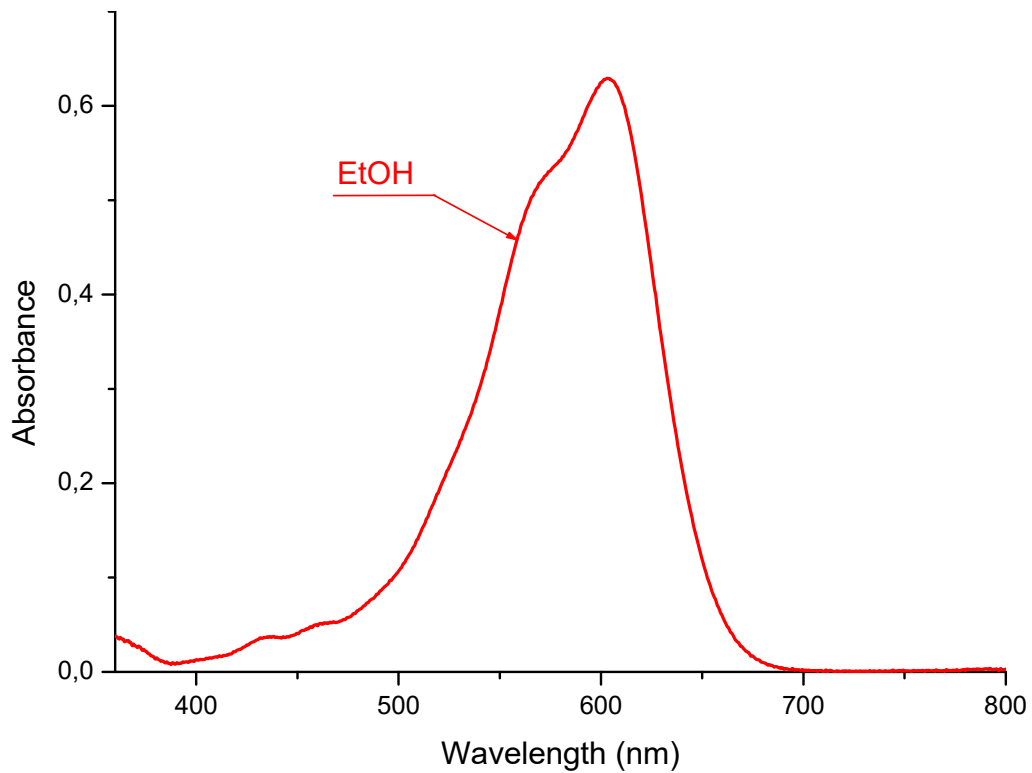
	Ethanol	
603	nm	M-1 cm-1
<hr/>		
	nm	M-1 cm-1

Emission

nm

$C_{27}H_{26}N_2OS_2$

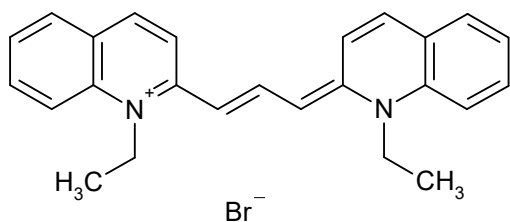
458.6491



S00263

CAS #
2670-67-9

Pinacyanol Bromide



Absorption

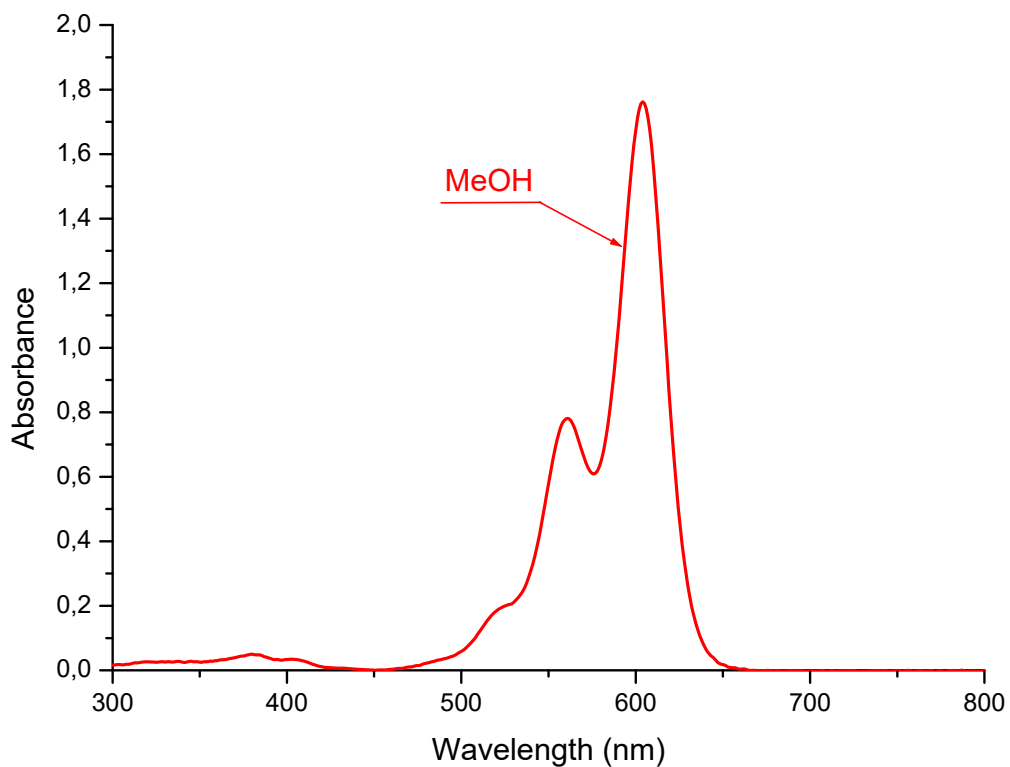
Methanol			
604	nm	181000	M-1 cm-1
	nm		M-1 cm-1

Emission

nm

C₂₅H₂₅BrN₂

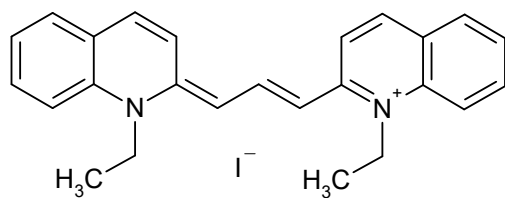
433.3954



S00261

CAS #
605-91-4

Pinacyanol Iodide



Absorption

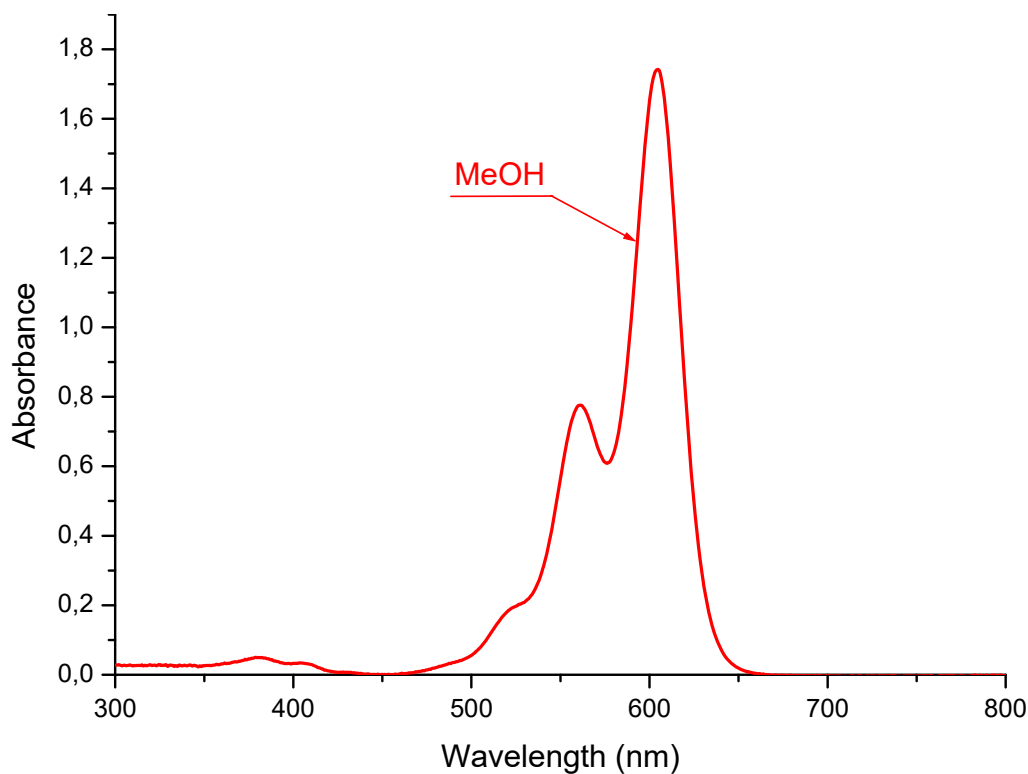
Methanol			
605	nm	189000	M-1 cm-1
_____		nm	M-1 cm-1

Emission

nm

C₂₅H₂₅IN₂

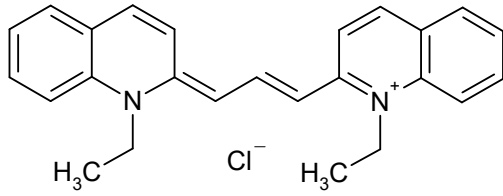
480.3958



S03902

CAS #
2768-90-3

Pinacyanol chloride



Absorption

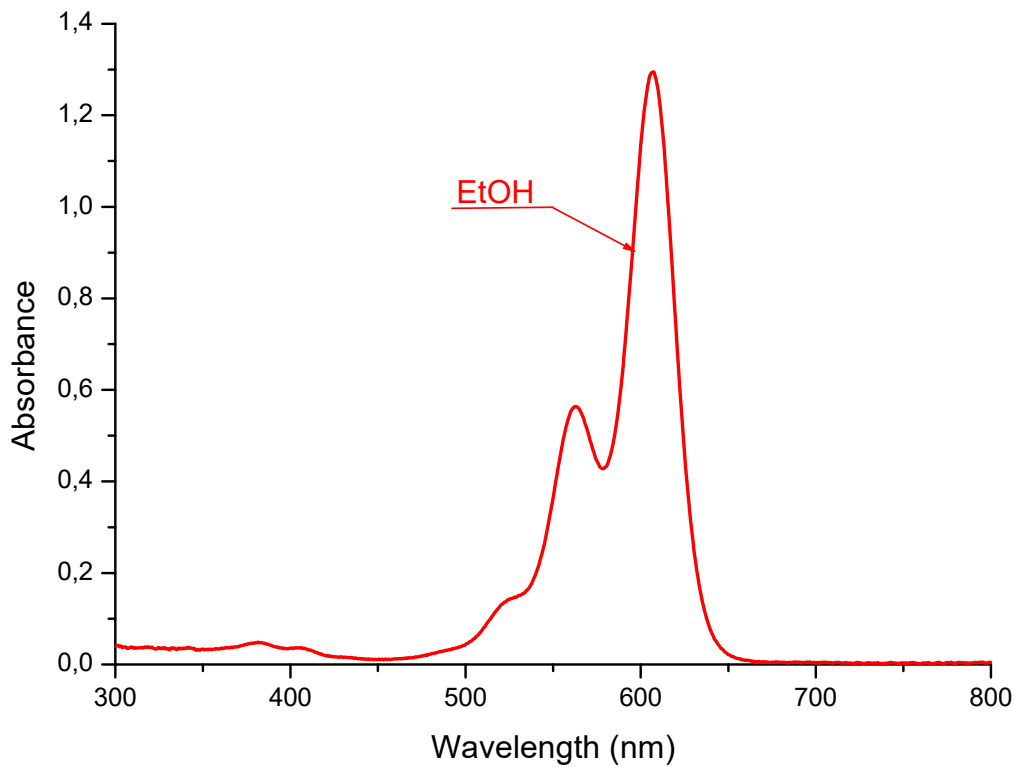
Ethanol			
607	nm	185000	M-1 cm-1
<hr/>			
	nm		M-1 cm-1

Emission

nm

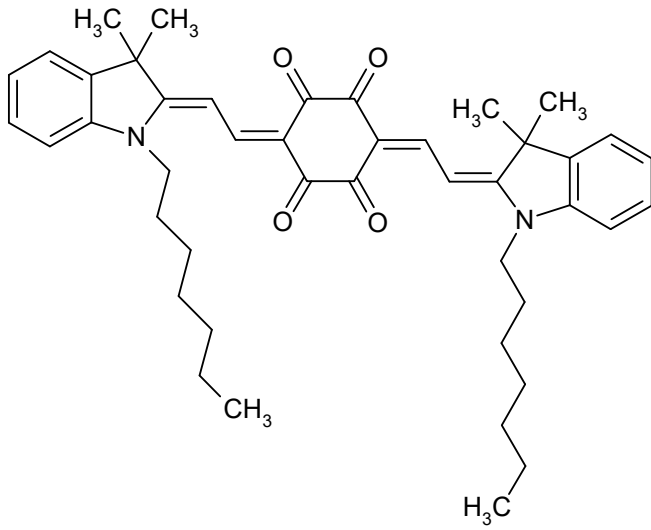
C₂₅H₂₅ClN₂

388.9444



S03924

CAS #



Absorption

Methylene chloride

607 nm 276000 M-1 cm-1

nm

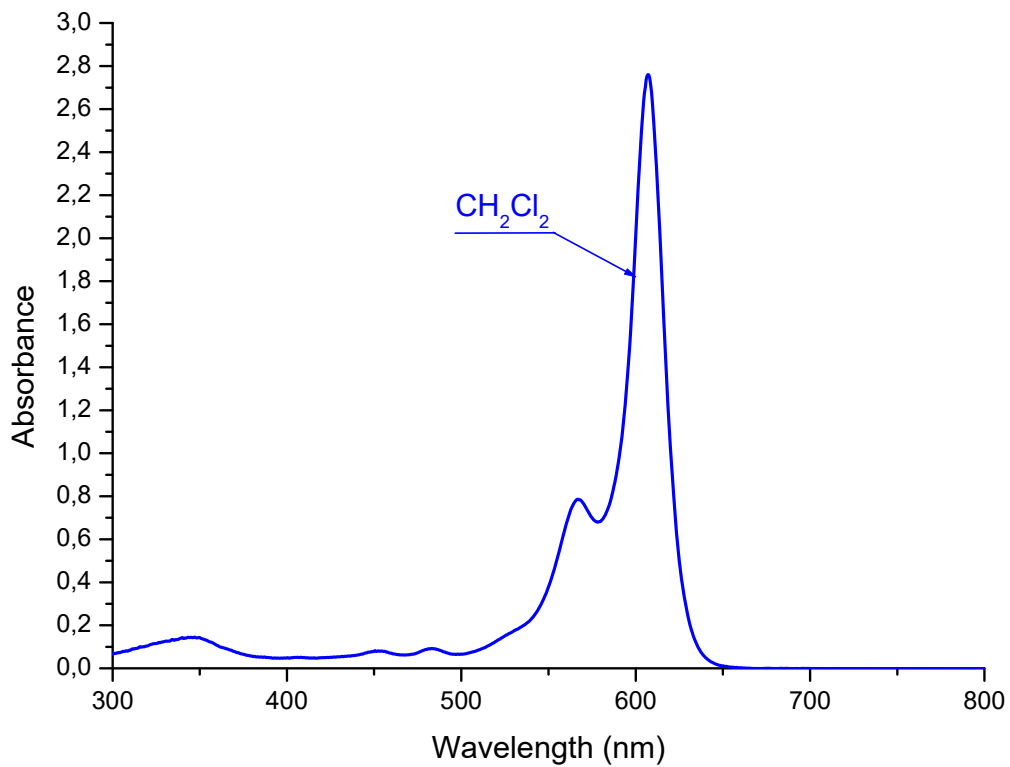
M-1 cm-1

Emission

nm

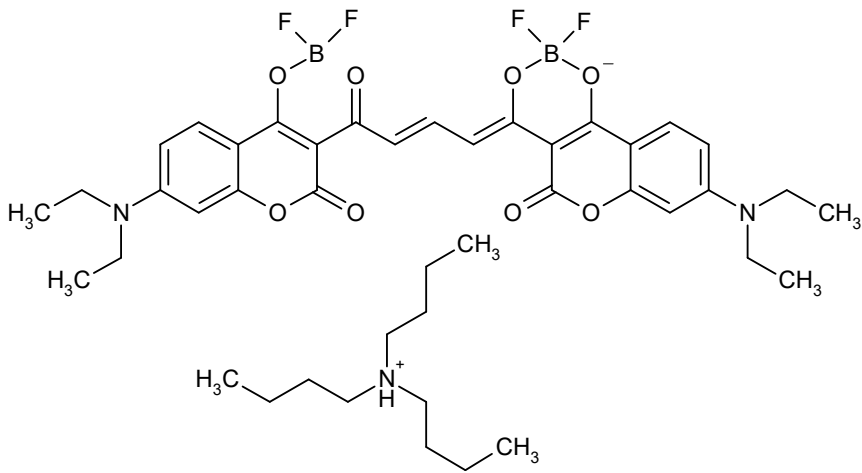
C₄₄H₅₄N₂O₄

674.9320



S03951

CAS #



Absorption

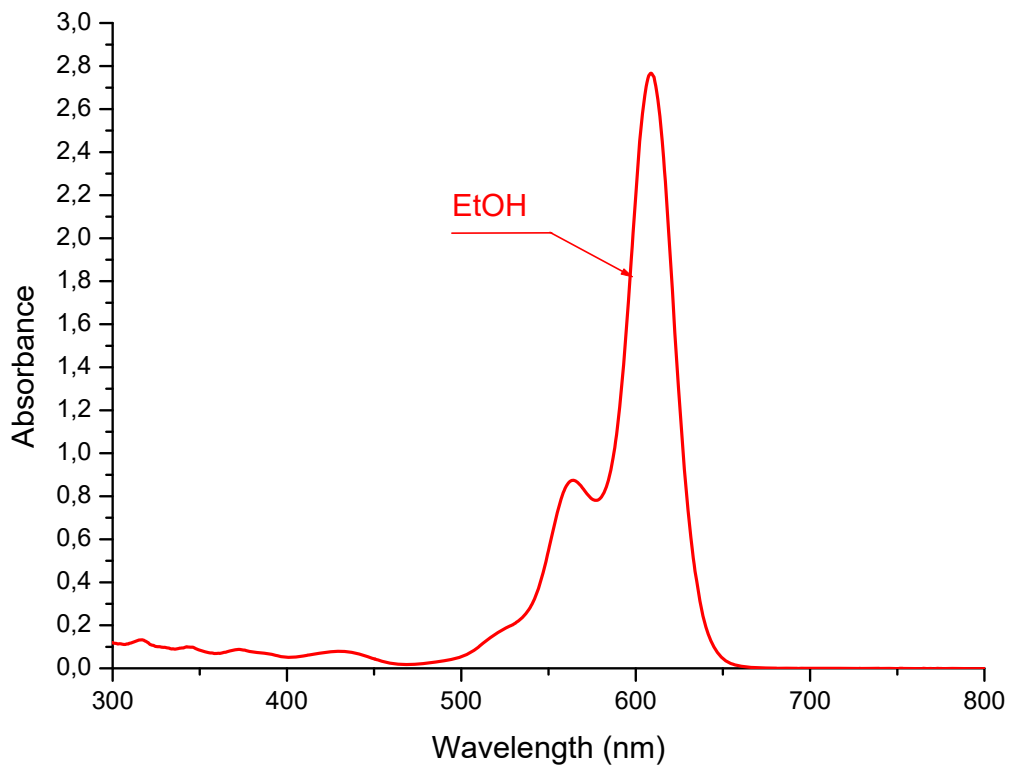
Ethanol			
609	nm	277000	M-1 cm-1

Emission

Acetonitrile			
636	nm		M-1 cm-1

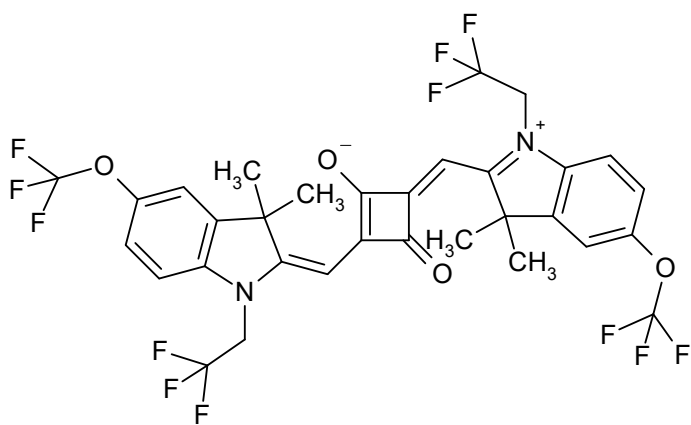
C₄₃H₅₇B₂F₄N₃O₈

841.5646



S02091

CAS #



Absorption

	Ethanol	
622	nm	273700 M-1 cm-1

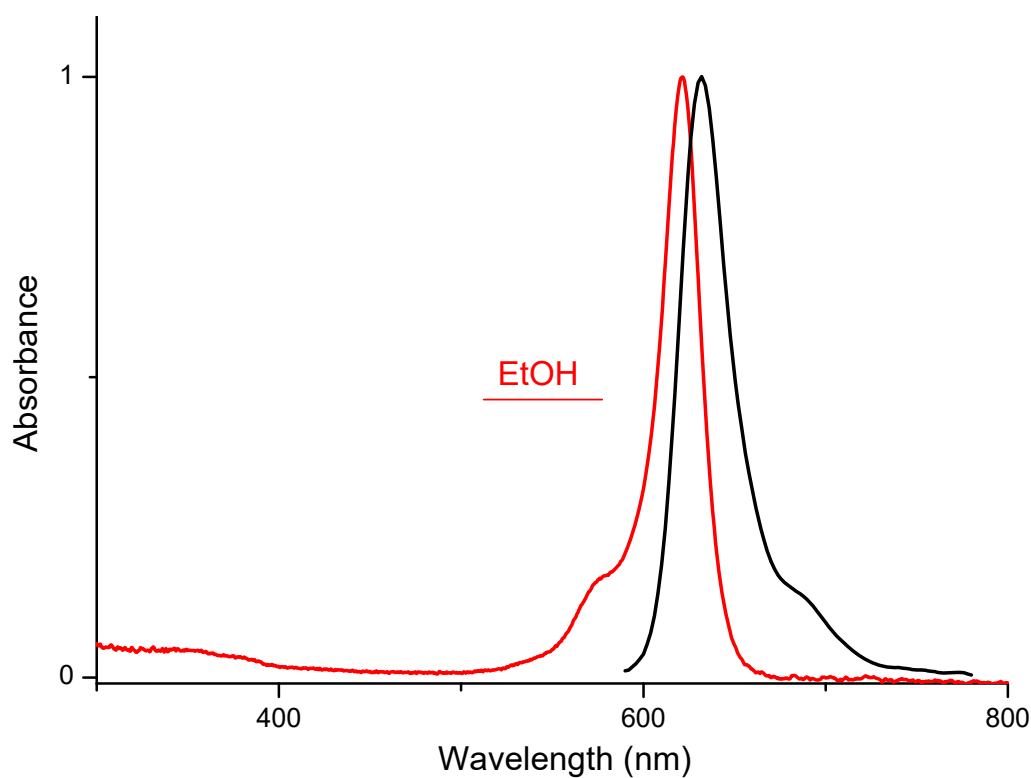
	nm	M-1 cm-1
--	----	----------

Emission

	Ethanol
632	nm

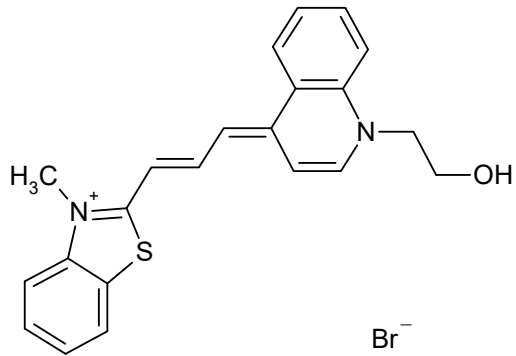
C₃₂H₂₄F₁₂N₂O₄

728.5399



S04473

CAS #



Absorption

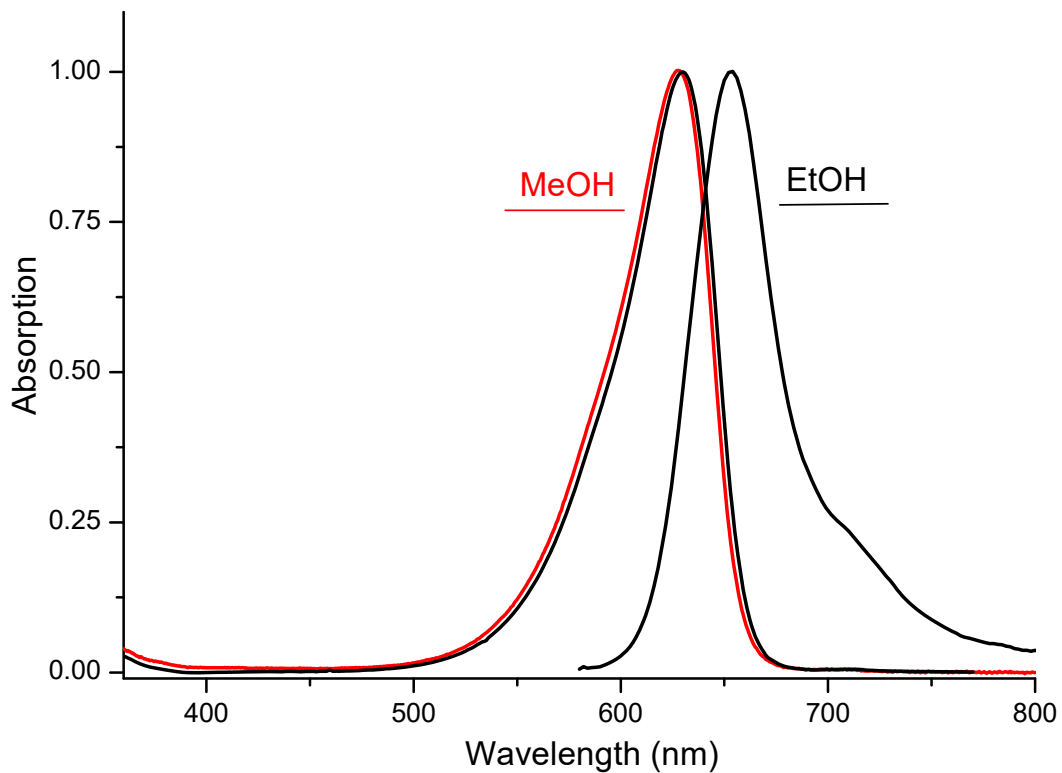
	Methanol		
628	nm	154000	M-1 cm-1
<hr/>			
	Ethanol		
630	nm		M-1 cm-1

Emission

	Ethanol
653	nm

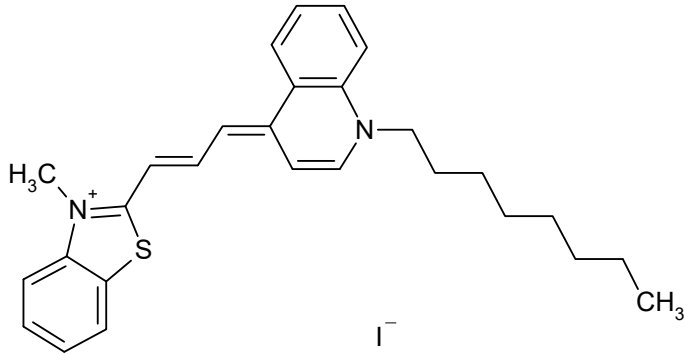
C₂₂H₂₁BrN₂OS

441.3935



S04149

CAS #



Absorption

	Methanol	
629	nm	130500 M-1 cm-1

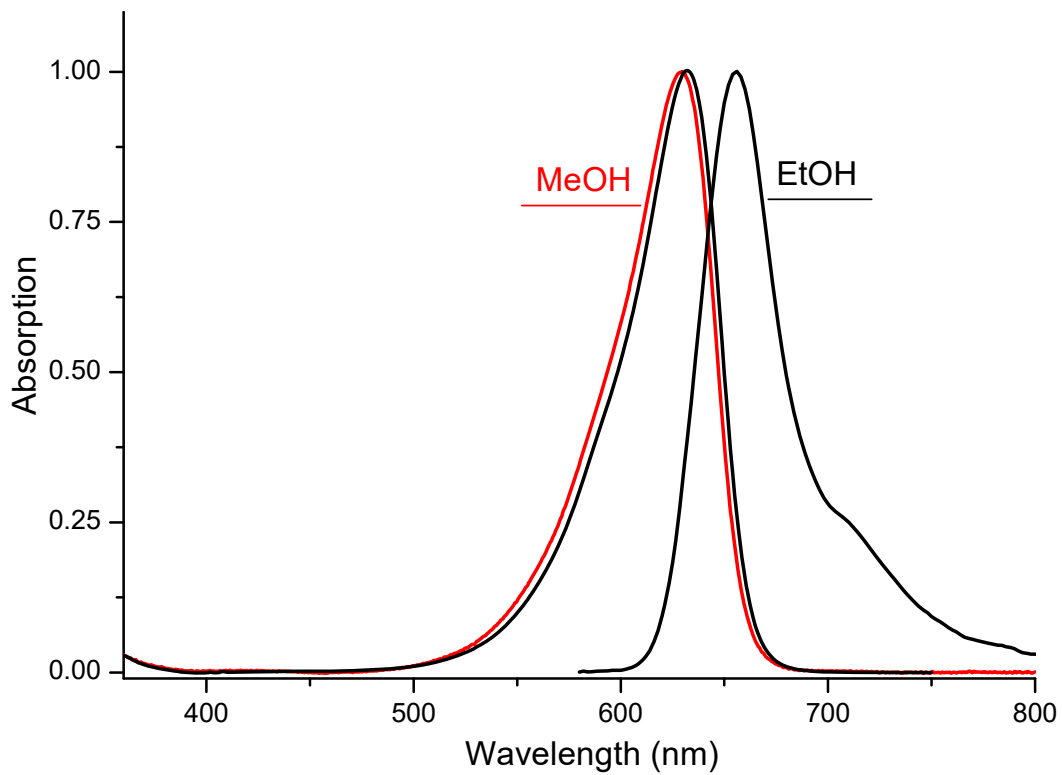
	Ethanol	
632	nm	M-1 cm-1

Emission

	Ethanol
656	nm

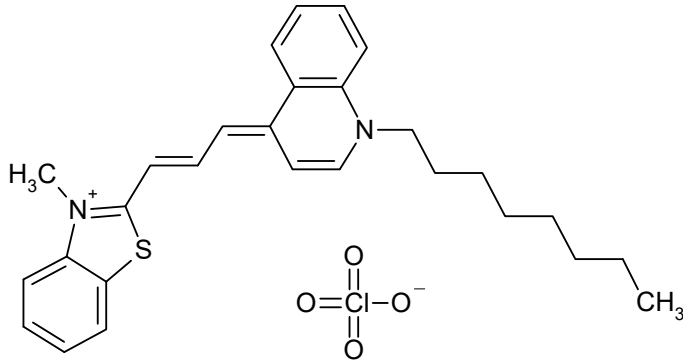
$C_{28}H_{33}IN_2S$

556.5570



S04159

CAS #



Absorption

Methanol

629 nm 130800 M-1 cm-1

nm

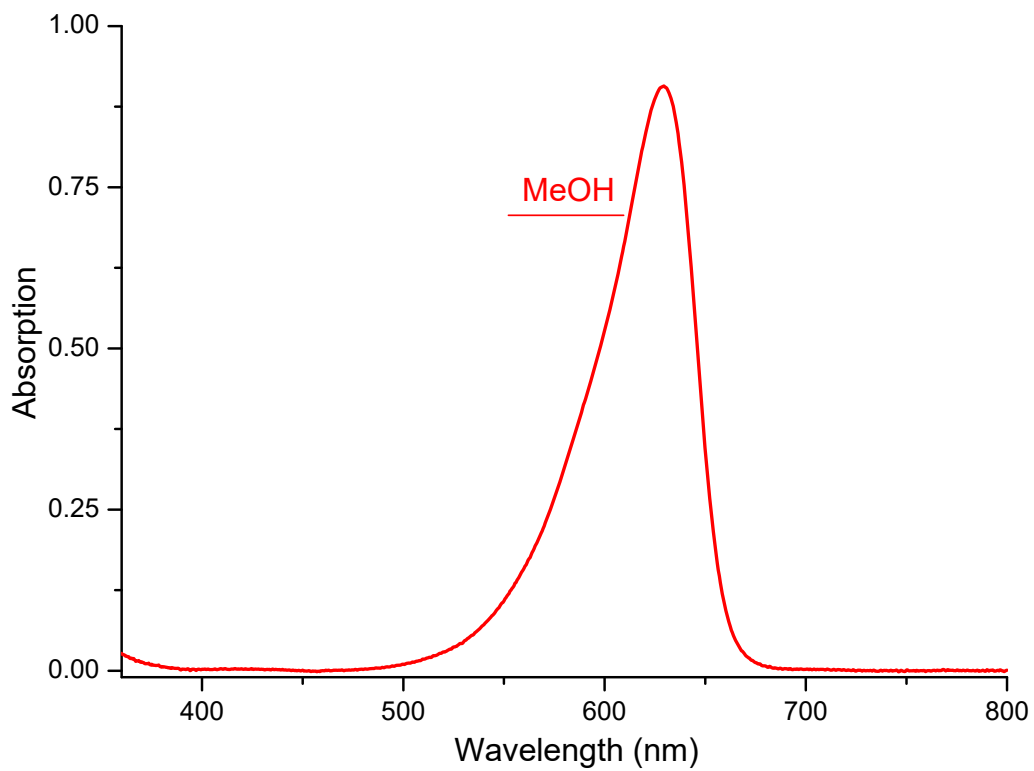
M-1 cm-1

Emission

nm

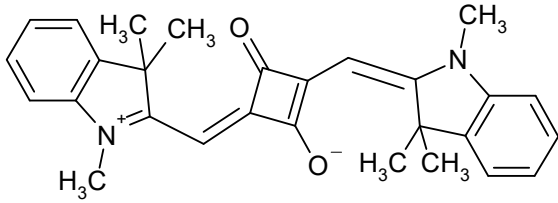
$C_{28}H_{33}ClN_2O_4S$

529.1032



S04224

CAS #



Absorption

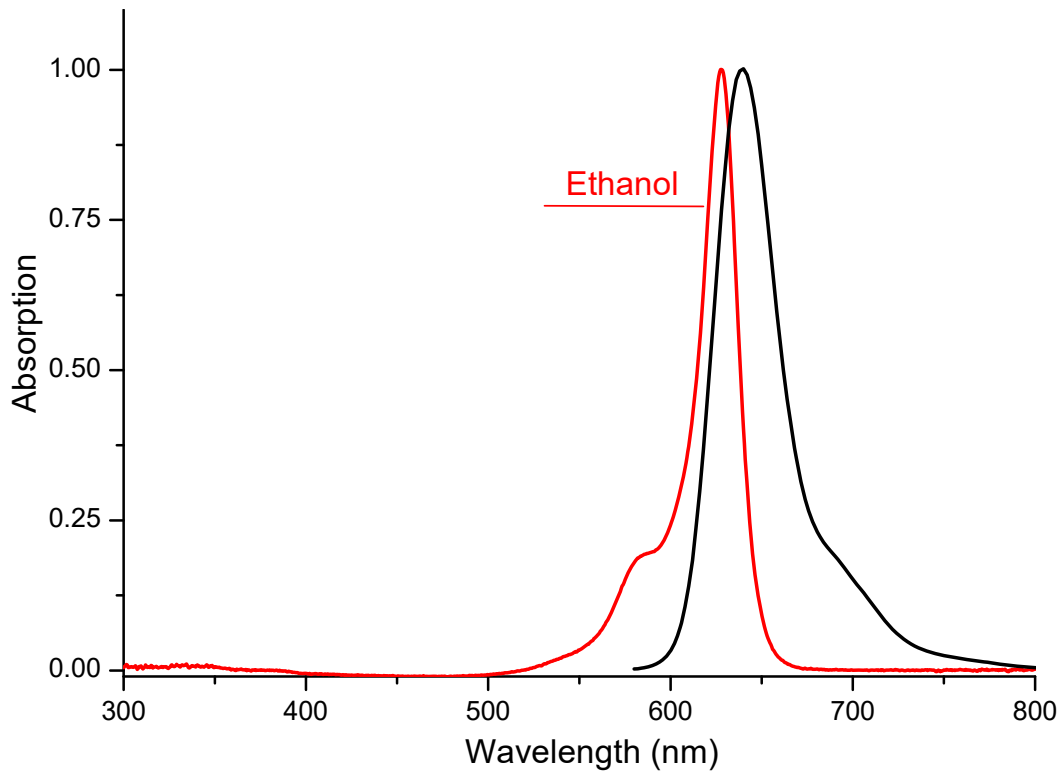
	Ethanol		
629	nm	297100	M-1 cm-1
<hr/>			
	nm		M-1 cm-1

Emission

	Ethanol
639	nm

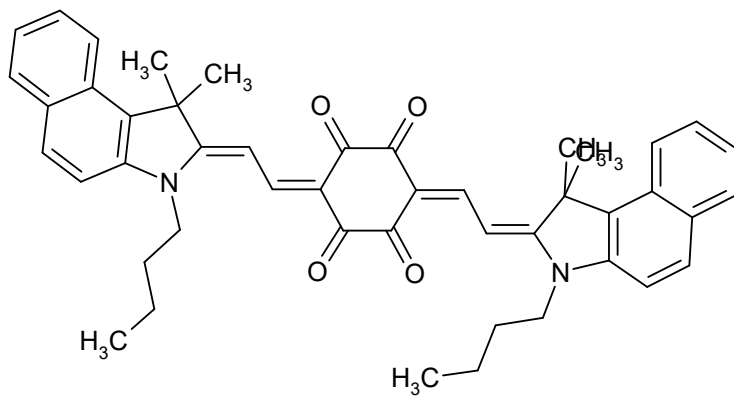
$C_{28}H_{28}N_2O_2$

424.5476



S04203

CAS #



Absorption

Methylene chloride

632 nm 235000 M-1 cm-1

nm

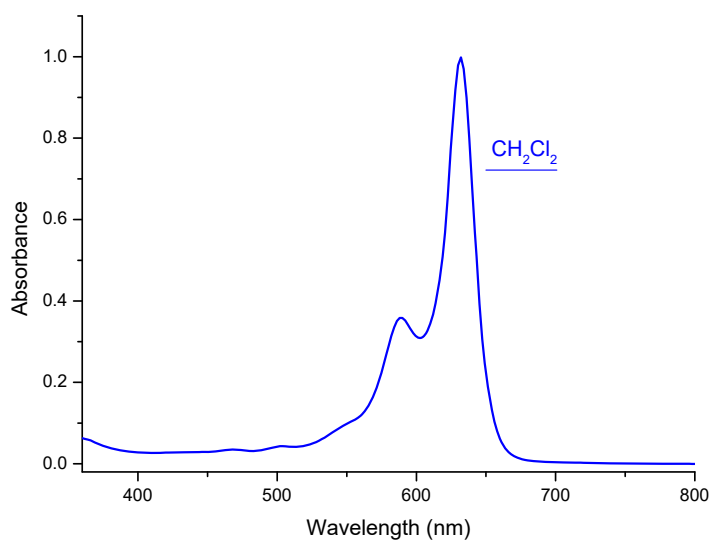
M-1 cm-1

Emission

nm

C₄₆H₄₆N₂O₄

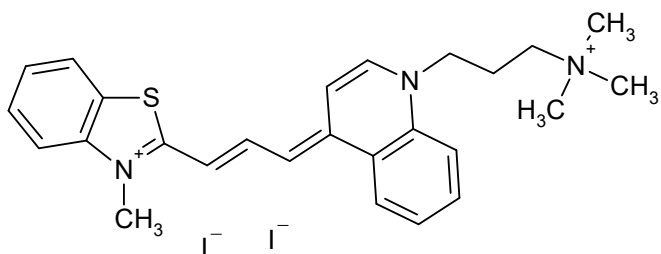
690.8905



S01494

CAS #
157199-63-8

TO-PRO-3



Absorption

	Methanol	
636	nm	158000 M-1 cm-1

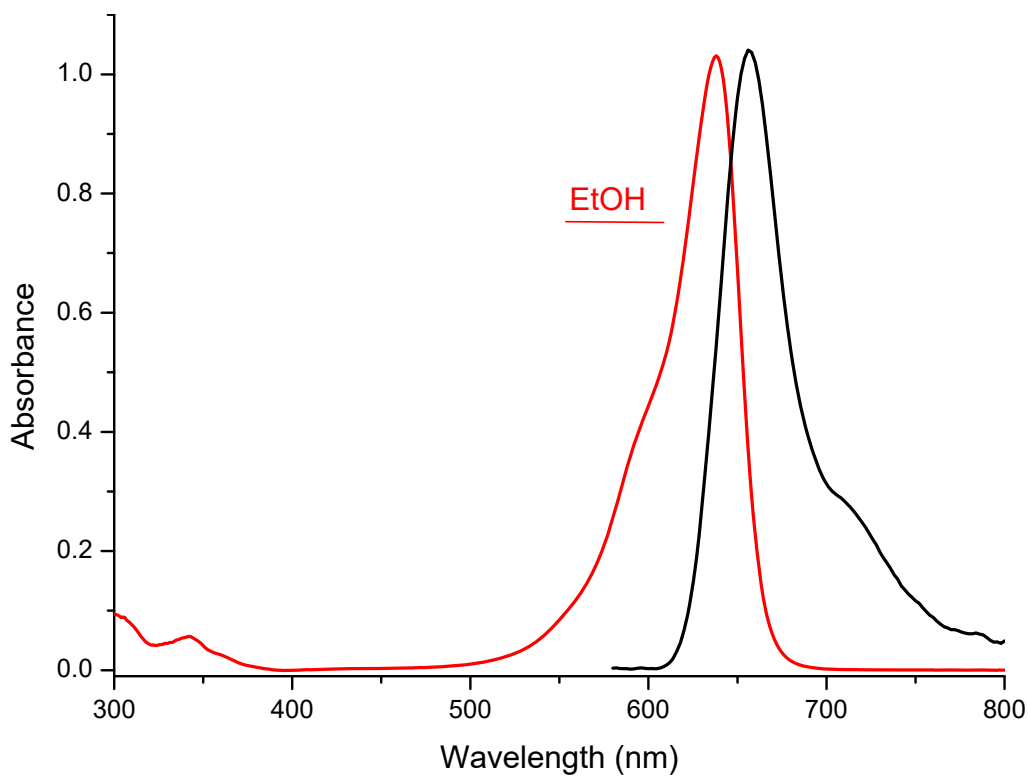
	Ethanol	
638	nm	M-1 cm-1

Emission

	Ethanol
657	nm

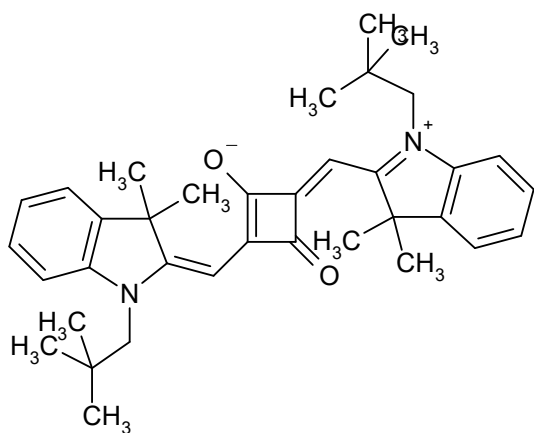
C₂₆H₃₁I₂N₃S

671.4299



S02090

CAS #



Absorption

	Ethanol	
638	nm	293900 M-1 cm-1

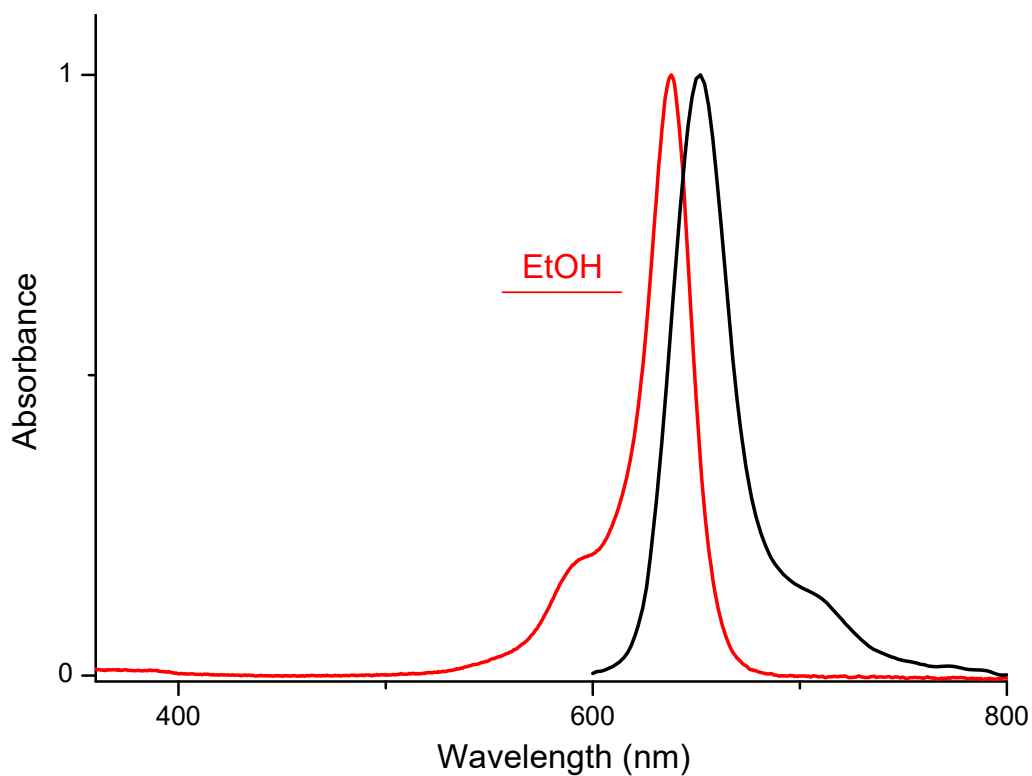
	nm	M-1 cm-1
--	----	----------

Emission

	Ethanol
652	nm

$C_{36}H_{44}N_2O_2$

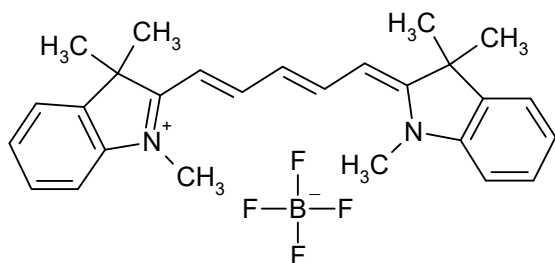
536.7643



D00530

CAS #
38575-74-5

1,1',3,3,3',3'-Hexamethylindodicarbocyanine
tetrafluoroborate



Absorption

	Methanol		
638	nm	237000	M-1 cm-1

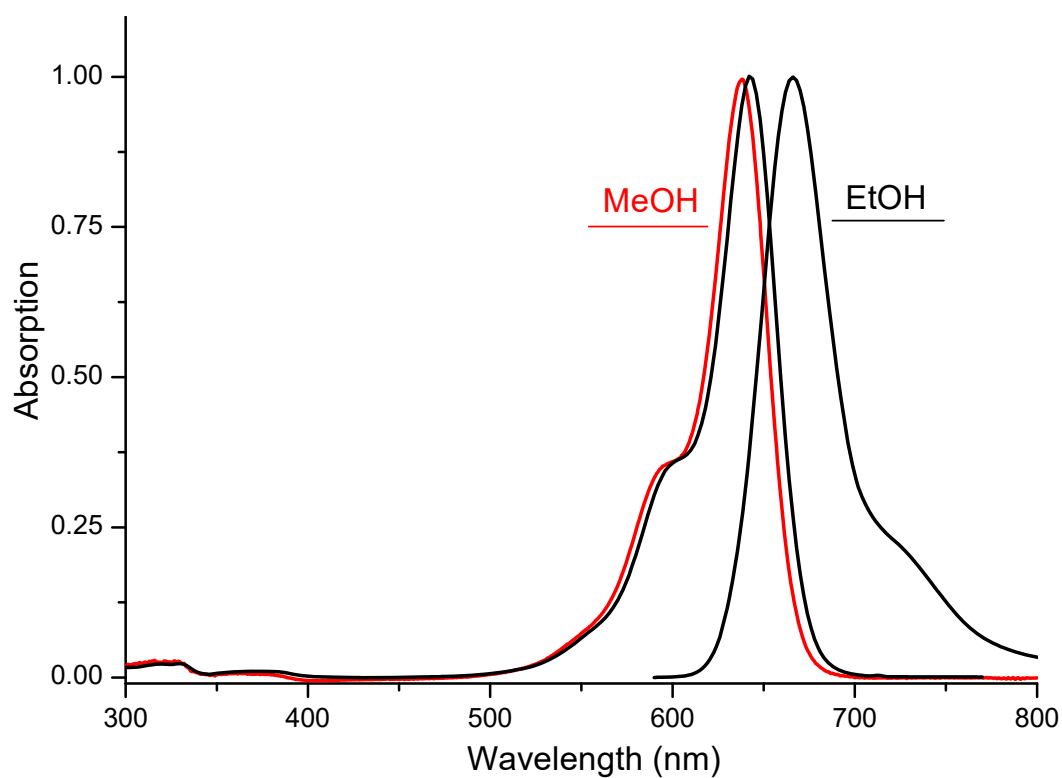
	Ethanol		
642	nm		M-1 cm-1

Emission

	Ethanol
666	nm

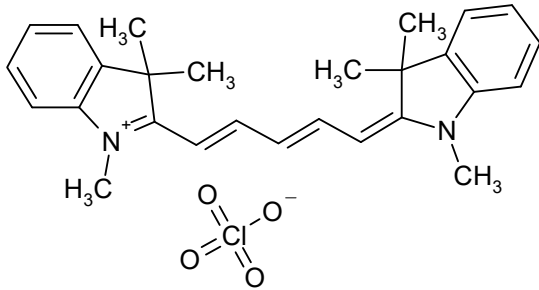
C₂₇H₃₁BF₄N₂

470.3661



S01370

CAS #
81666-87-7



Absorption

Methanol			
638	nm	237000	M-1 cm-1

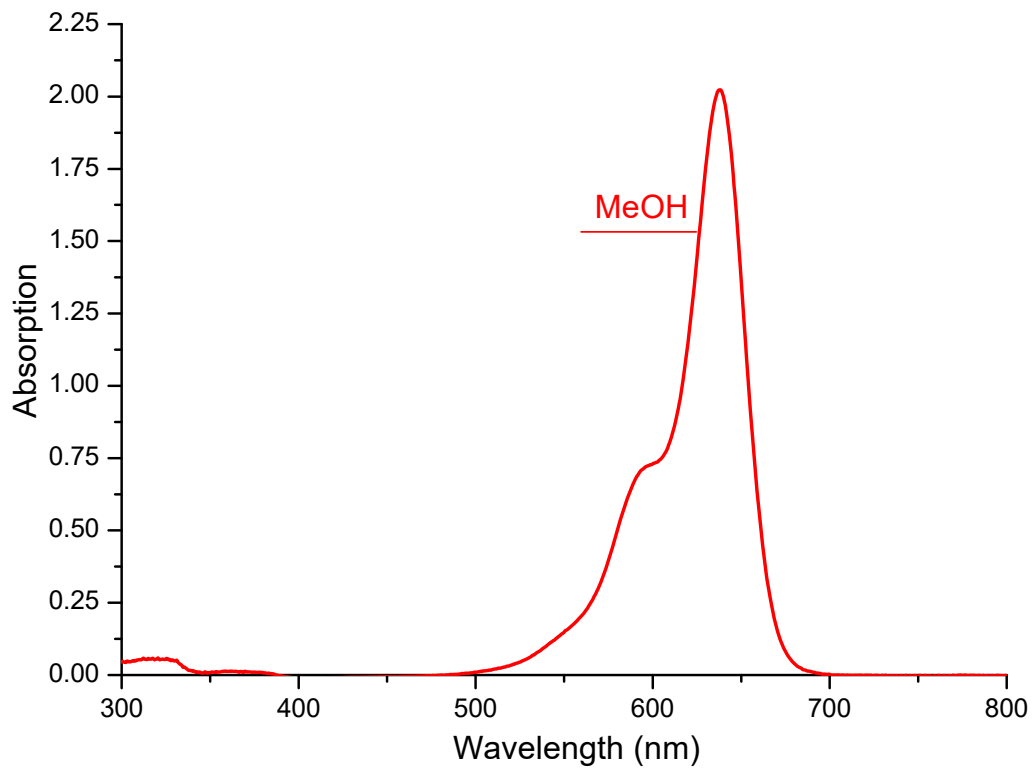
	nm		M-1 cm-1
--	----	--	----------

Emission

nm

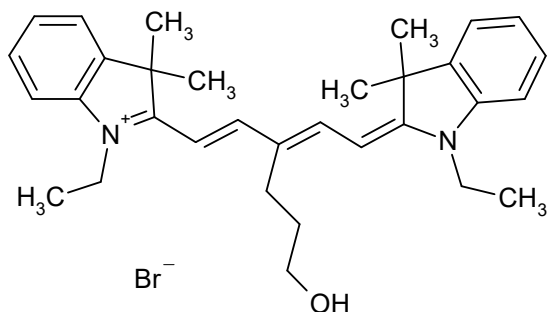
C₂₇H₃₁ClN₂O₄

483.0121



S03993

CAS #



Absorption

	Ethanol	
640	nm	232000 M-1 cm-1

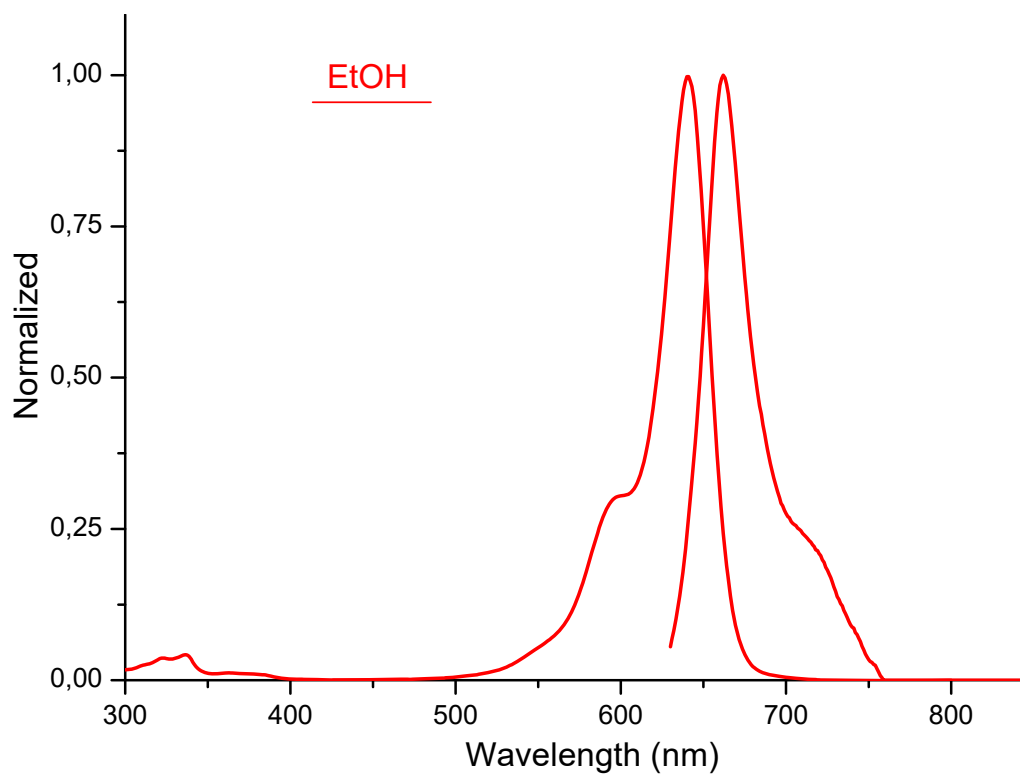
	nm	M-1 cm-1
--	----	----------

Emission

	Ethanol
662	nm

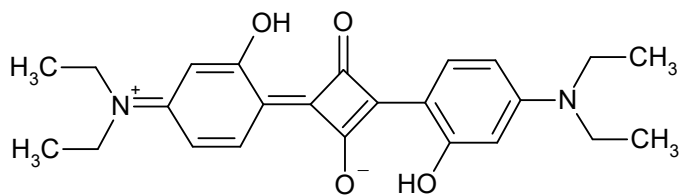
$\text{C}_{32}\text{H}_{41}\text{BrN}_2\text{O}$

549.6004



S12011

CAS #



Absorption

Ethanol

641

nm

M-1 cm-1

nm

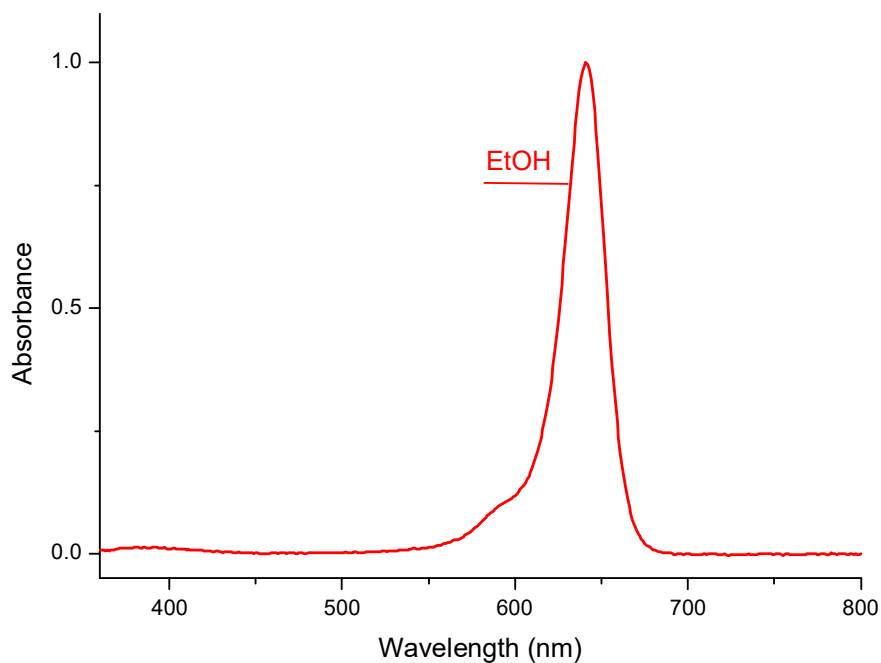
M-1 cm-1

Emission

nm

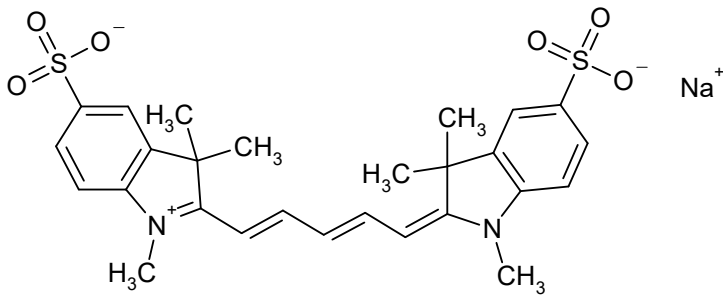
C₂₄H₂₈N₂O₄

408.5018



S01403

CAS #



Absorption

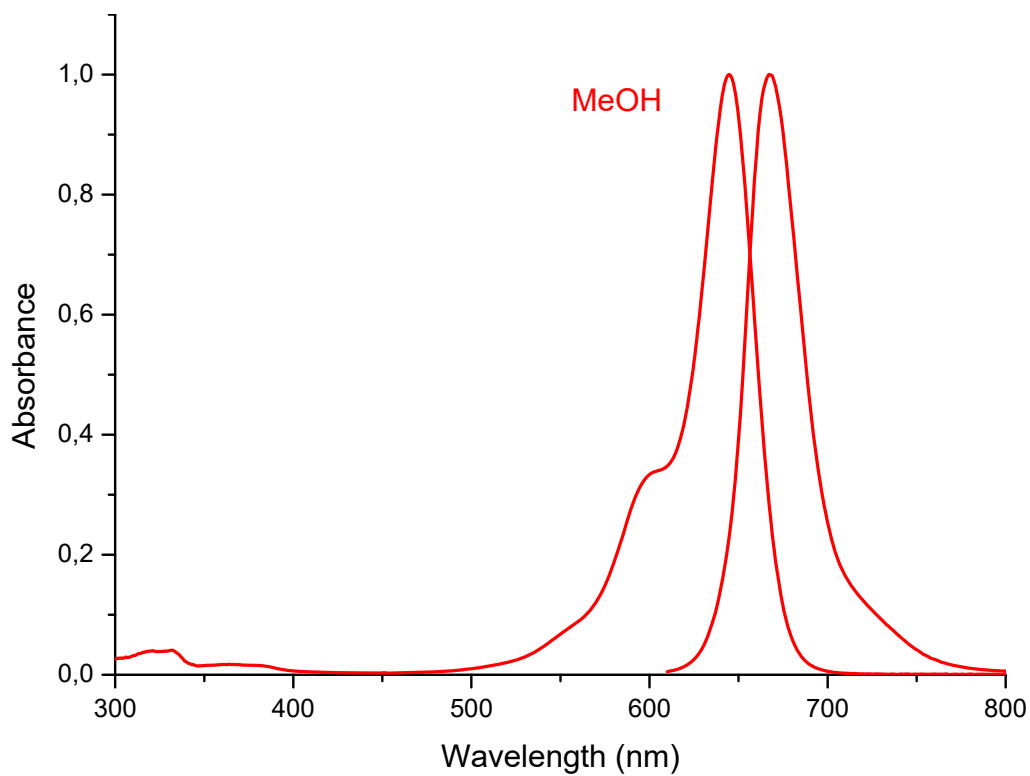
Methanol			
645	nm	237000	M-1 cm-1
<hr/>			
	nm		M-1 cm-1

Emission

Methanol	
667	nm

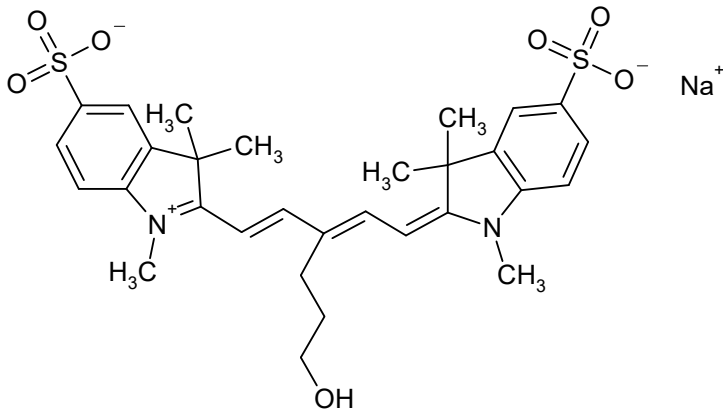
C₂₇H₂₉N₂NaO₆S₂

564.6598



S01406

CAS #



Absorption

	Ethanol	
646	nm	231000 M-1 cm-1

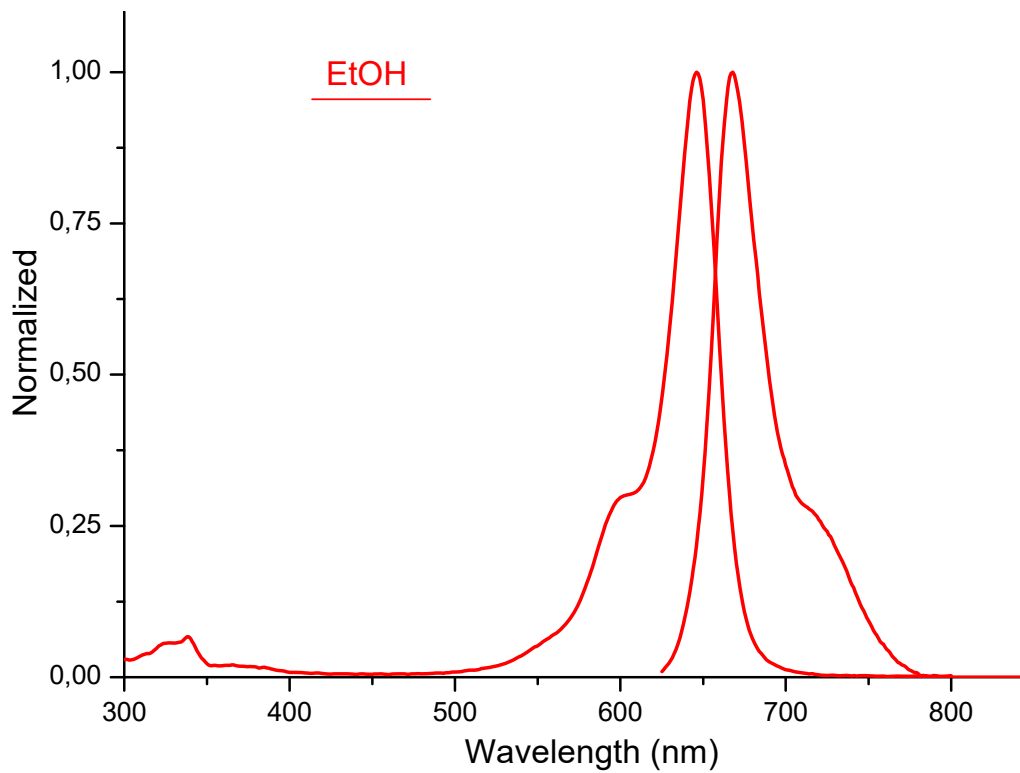
	nm	M-1 cm-1
--	----	----------

Emission

	Ethanol	
668	nm	

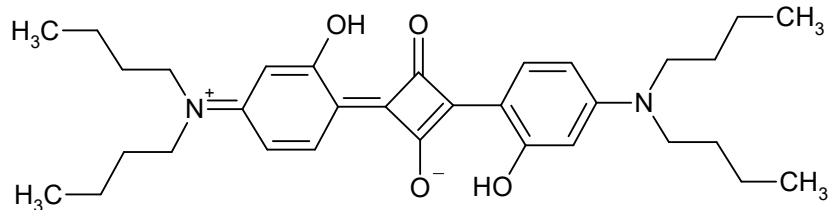
C₃₀H₃₅N₂NaO₇S₂

622.7405



S12012

CAS #



Absorption

Ethanol

646

nm

M-1 cm-1

nm

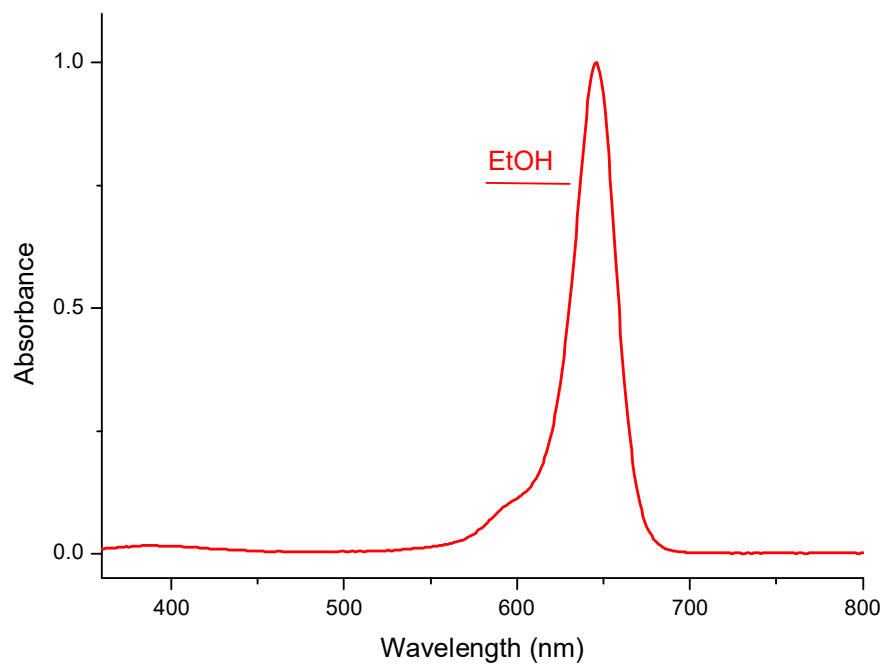
M-1 cm-1

Emission

nm

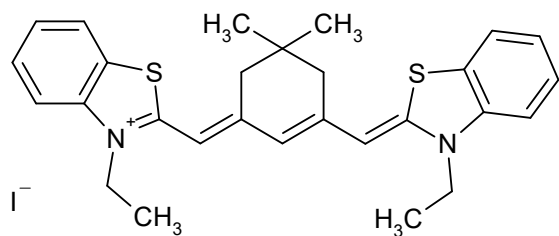
$C_{32}H_{44}N_2O_4$

520.7185



S01170

CAS #
20517-94-6



Absorption

MeOH			
648	nm	165000	M-1 cm-1

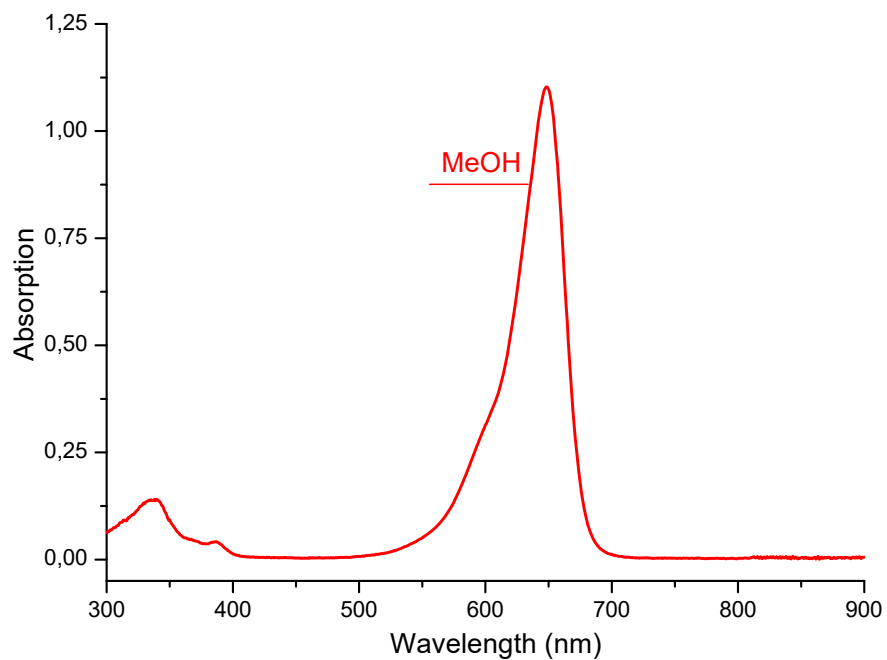
	nm		M-1 cm-1
--	----	--	----------

Emission

nm

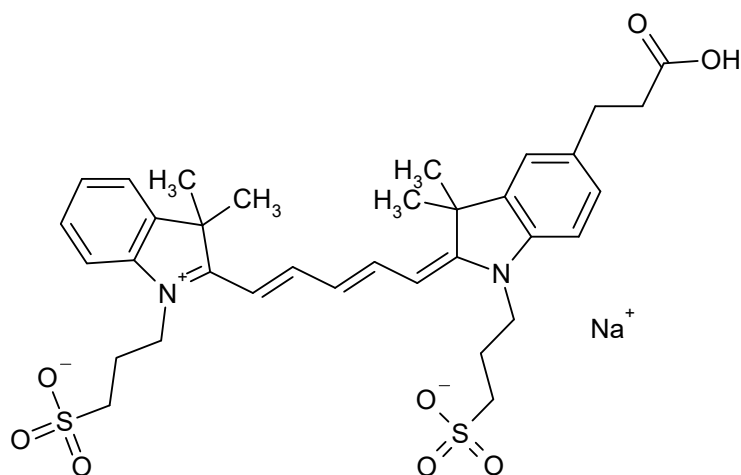
$C_{28}H_{31}IN_2S_2$

586.6051



S03866

CAS #



Absorption

	Methanol	
649	nm	204000 M-1 cm-1

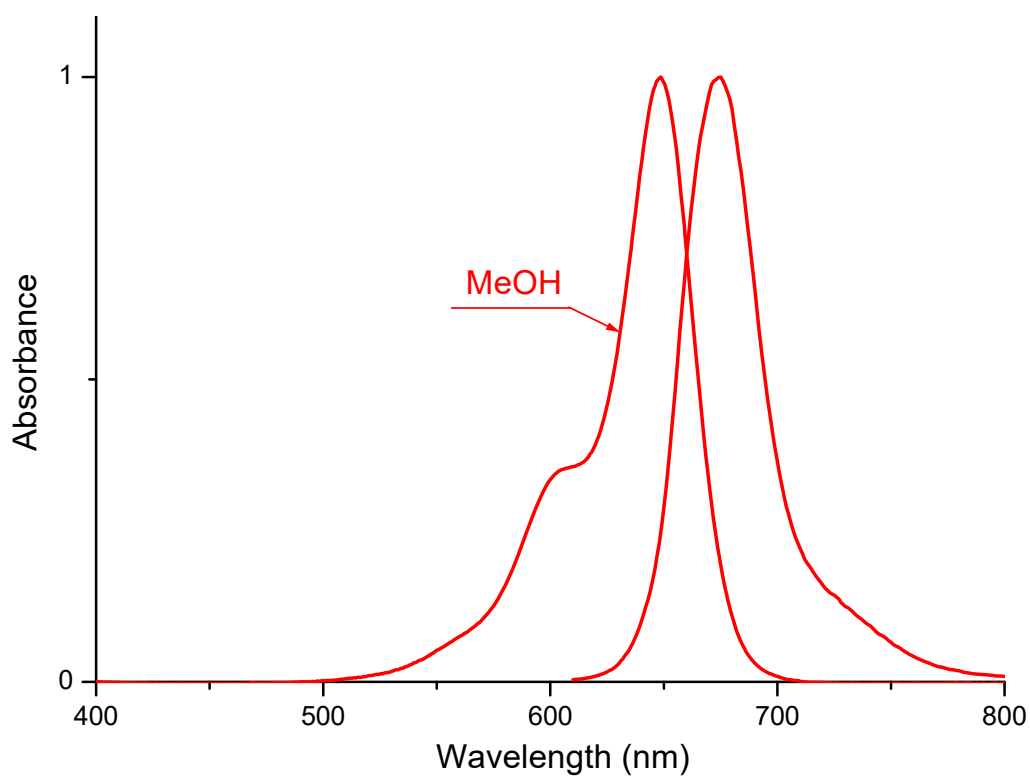
	nm	M-1 cm-1
--	----	----------

Emission

	Methanol
675	nm

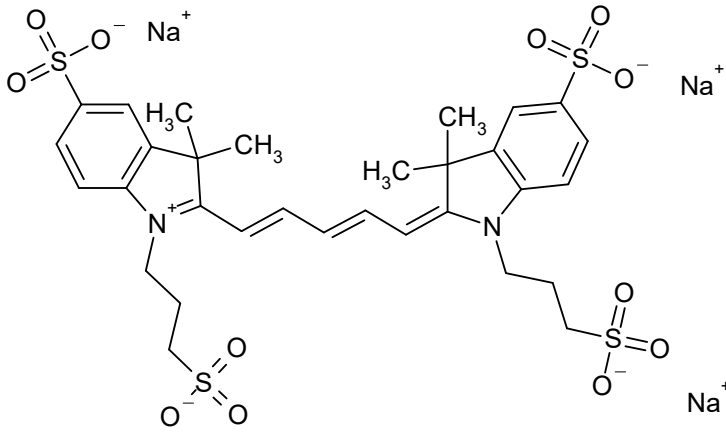
C₃₄H₄₁N₂NaO₈S₂

692.8323



S01404

CAS #
190517-63-6



Absorption

	Methanol	
649	nm	230000 M-1 cm-1

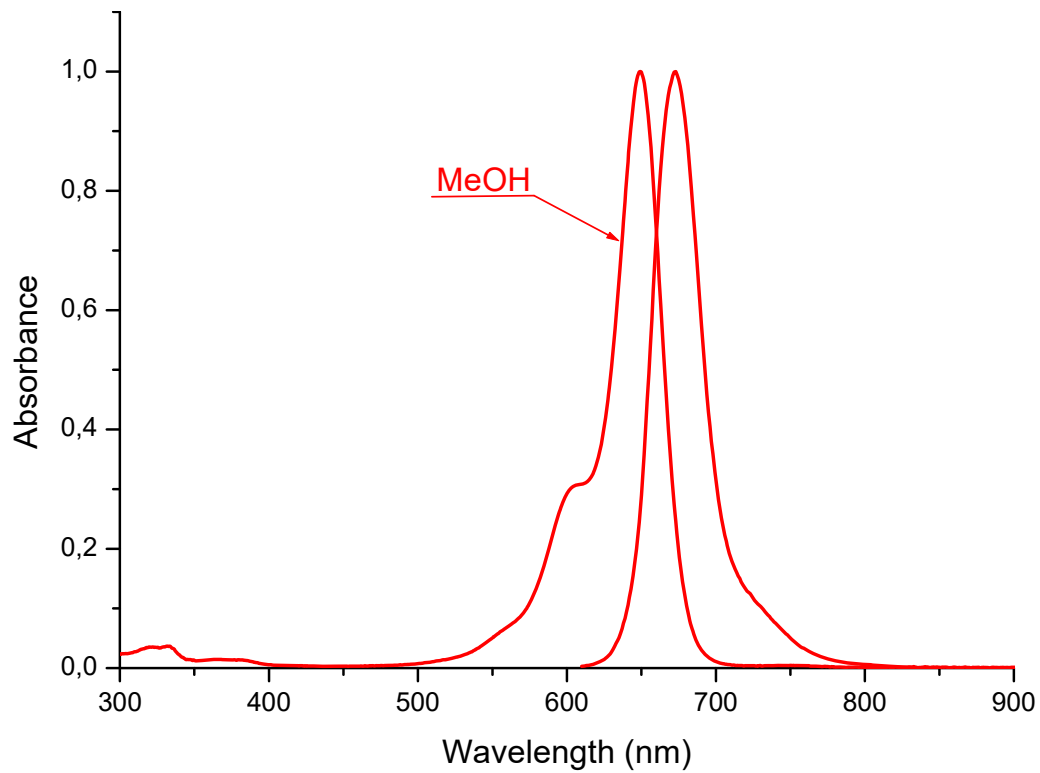
	nm	M-1 cm-1
--	----	----------

Emission

	Methanol
673	nm

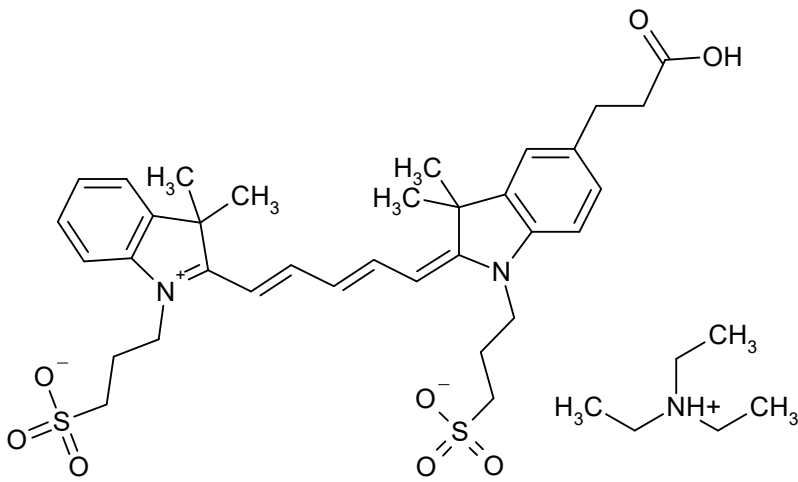
$C_{31}H_{35}N_2Na_3O_{12}S_4$

824.8562



S03857

CAS #



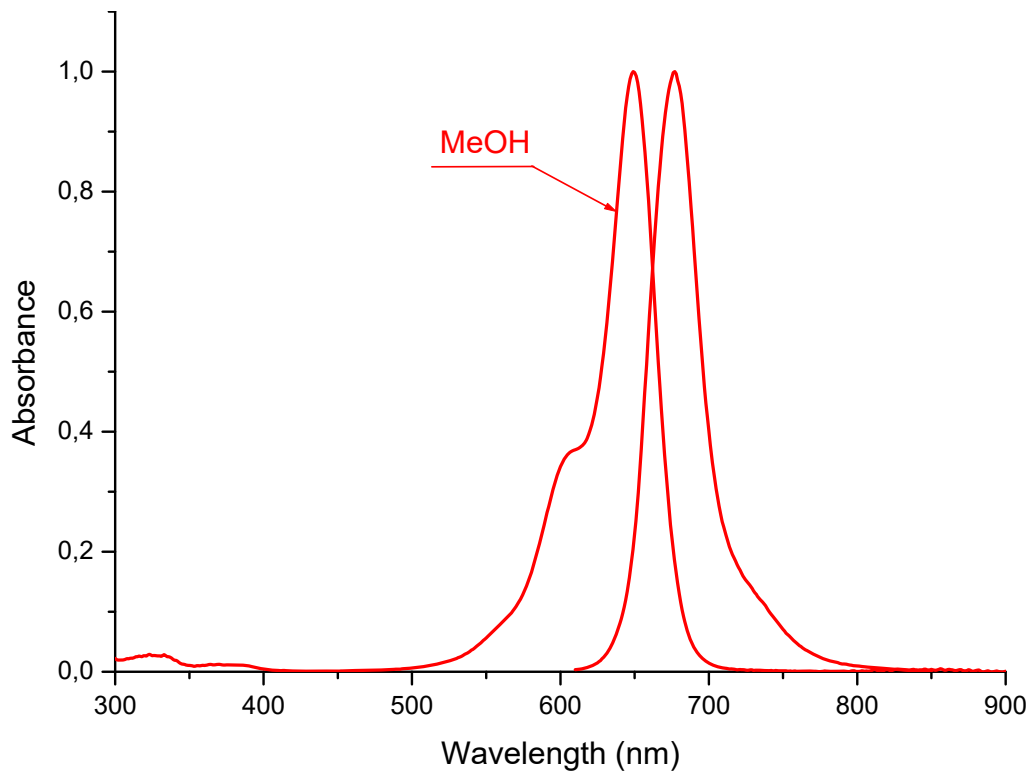
Absorption

	Methanol	
649	nm	216000 M-1 cm-1

	nm	M-1 cm-1
Emission	Methanol	
677	nm	

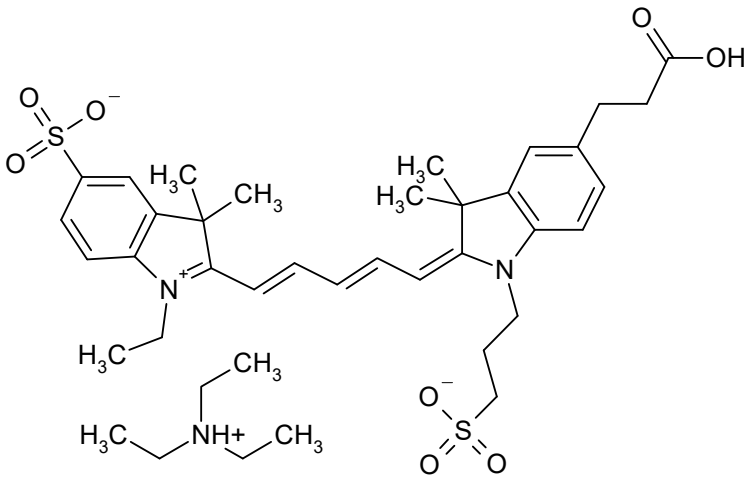
C₄₁H₅₇N₂O₈S₂

770.0480



S03850

CAS #



Absorption

	Methanol	
650	nm	205000 M-1 cm-1

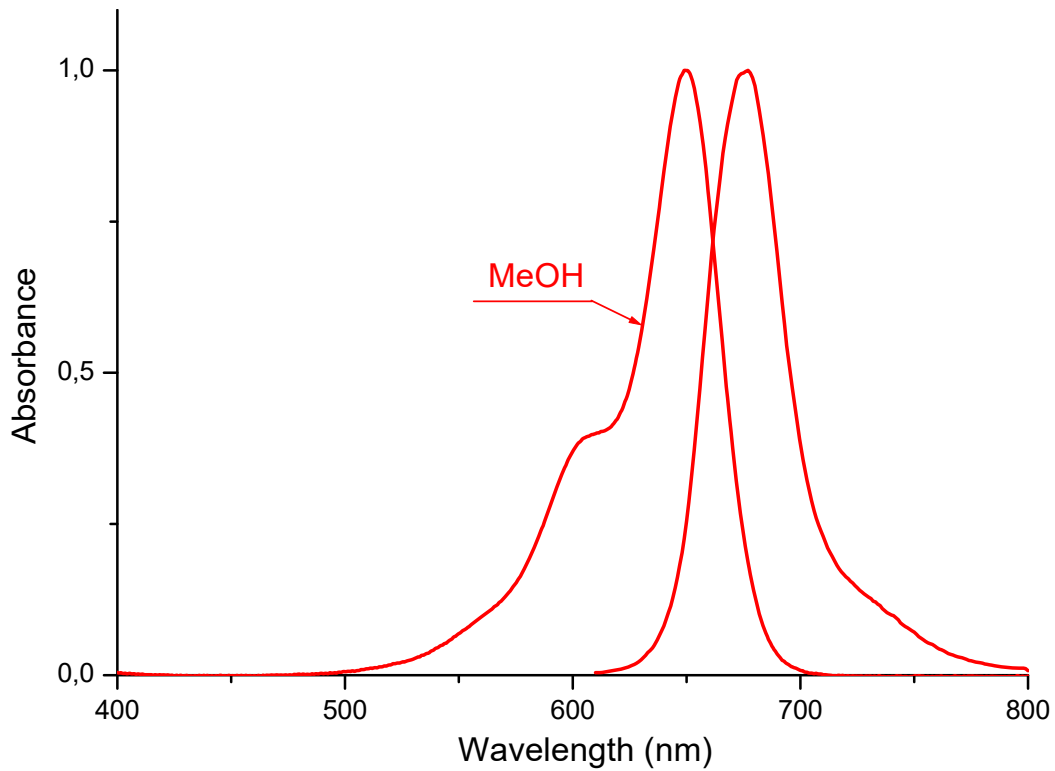
	nm	M-1 cm-1

Emission

	Methanol	
677	nm	

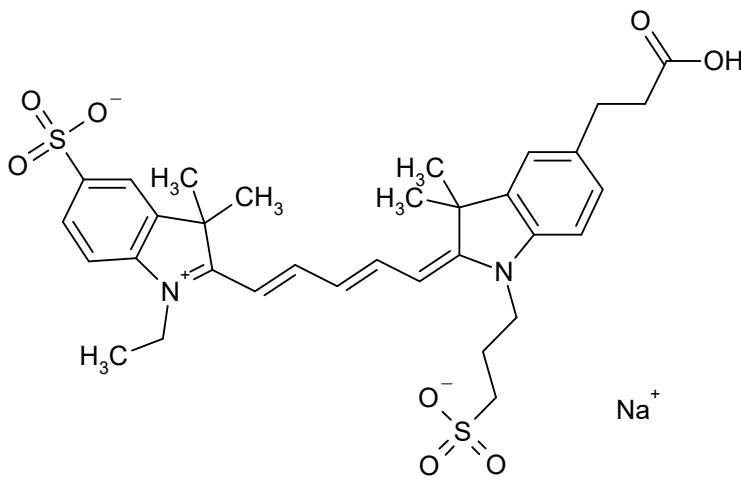
C₄₀H₅₅N₂O₈S₂

756.0210



S03950

CAS #



Absorption

Methanol			
650	nm	223500	M-1 cm-1

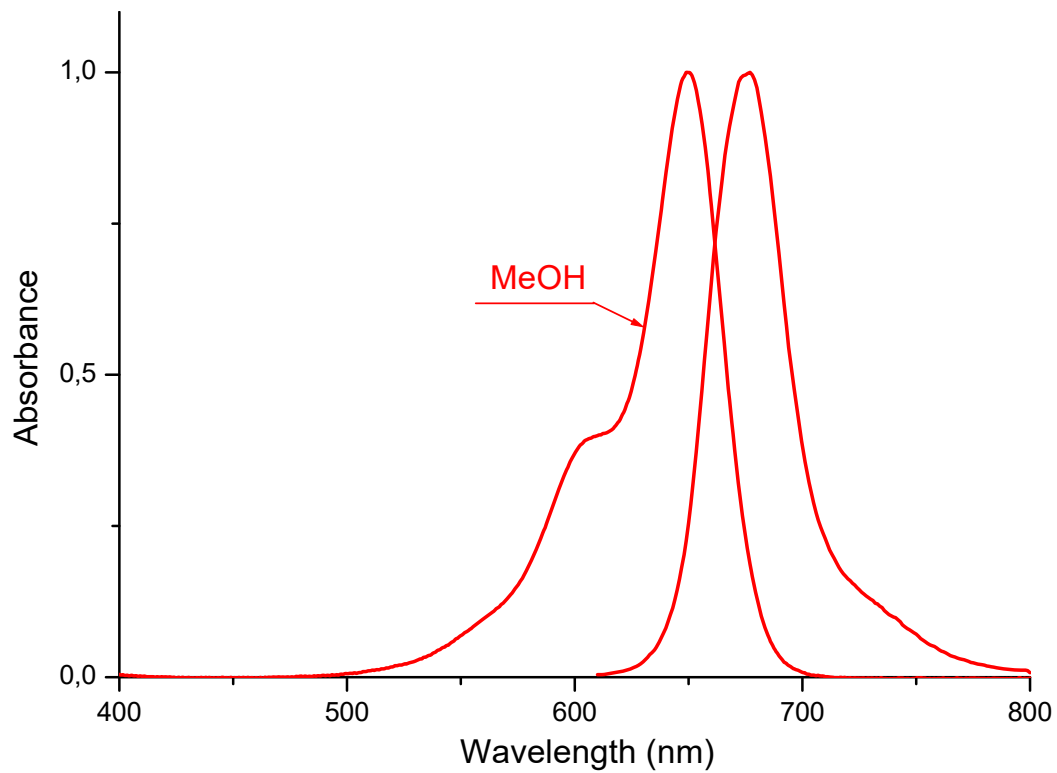
nm M-1 cm-1

Emission

Methanol	
677	nm

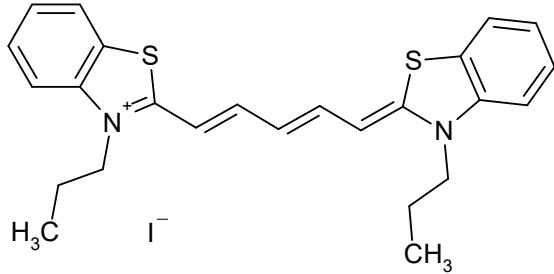
C₃₃H₃₉N₂NaO₈S₂

678.8052



S00247

CAS #
53213-94-8



Absorption

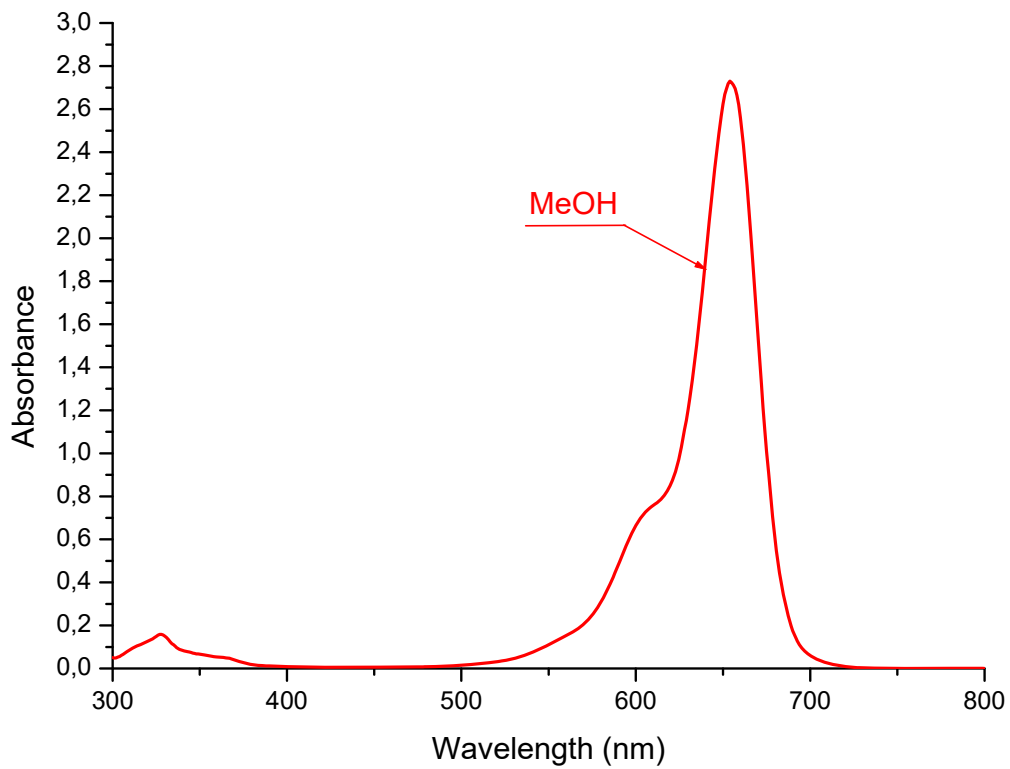
	Methanol	
654	nm	240000 M-1 cm-1
	nm	M-1 cm-1

Emission

nm

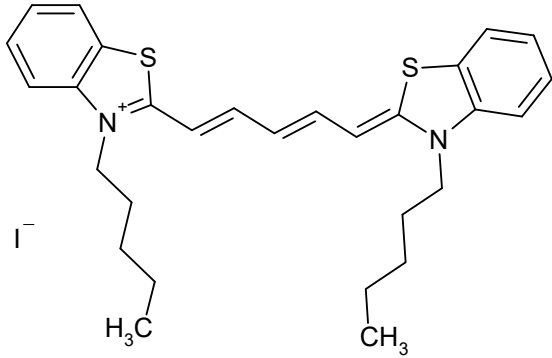
C₂₅H₂₇N₂S₂

546.5397



S01305

CAS #
53213-96-0



Absorption

Methanol			
655	nm	242000	M-1 cm-1

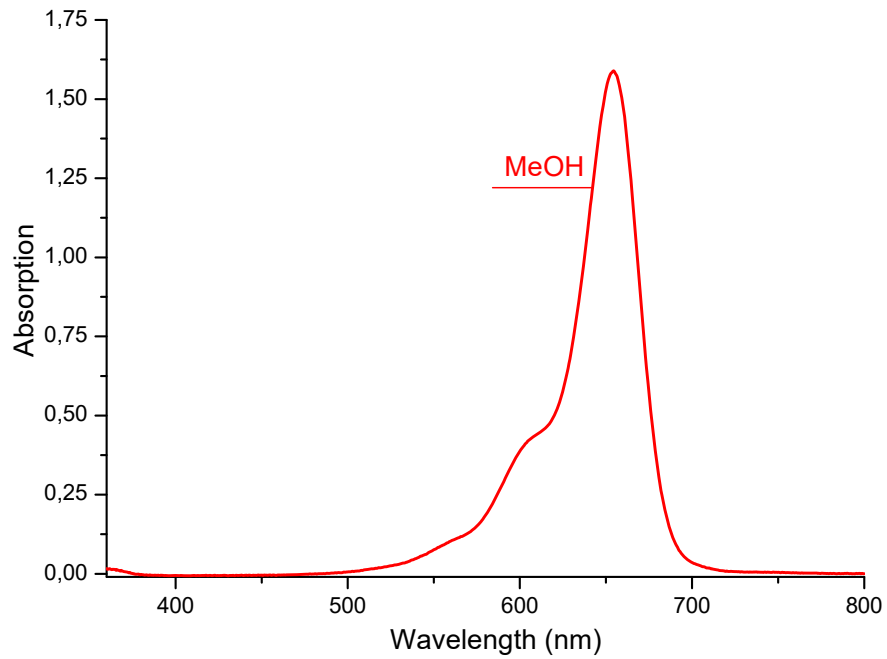
	nm		M-1 cm-1
--	----	--	----------

Emission

nm

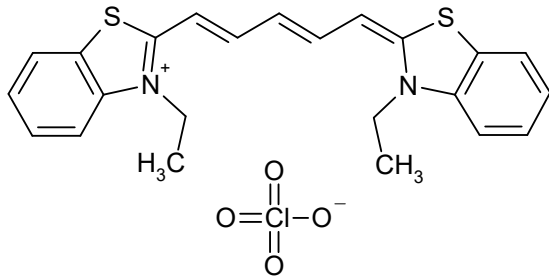
C₂₉H₃₅IN₂S₂

602.6481



S00248

CAS #
22268-65-1



Absorption

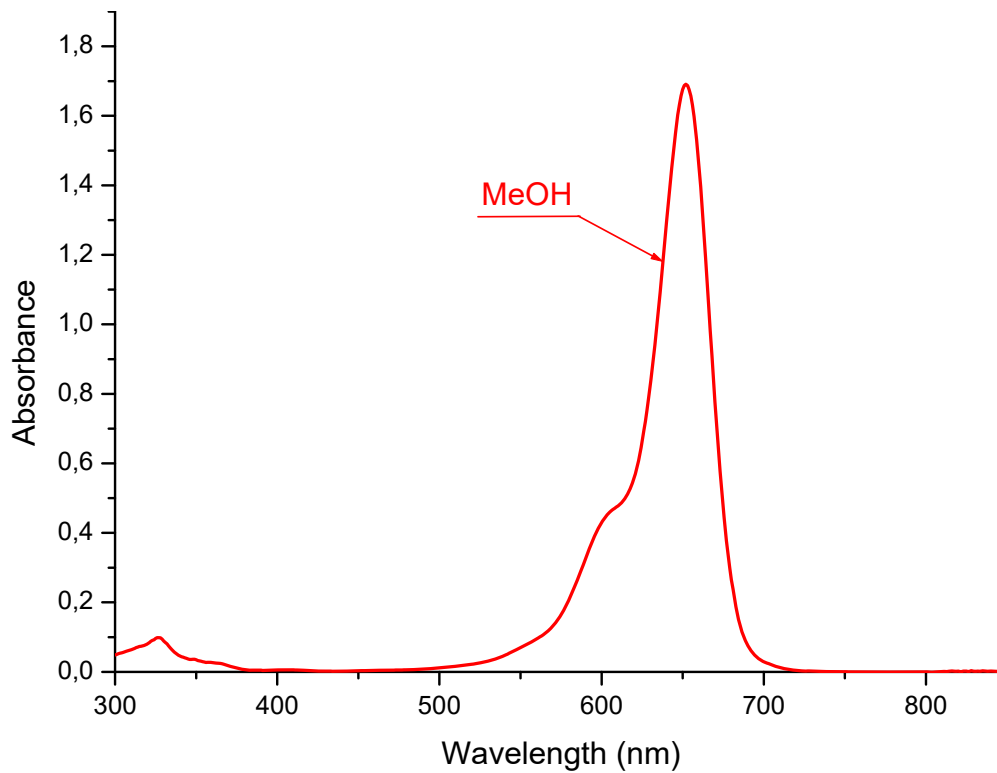
	Ethanol		
656	nm	237000	M-1 cm-1
	nm		M-1 cm-1

Emission

nm

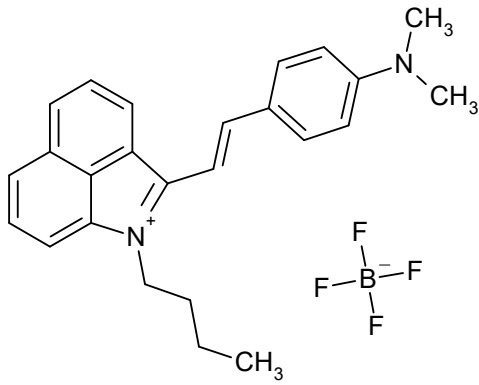
C₂₃H₂₃ClN₂O₄S₂

491.0318



S04134

CAS #

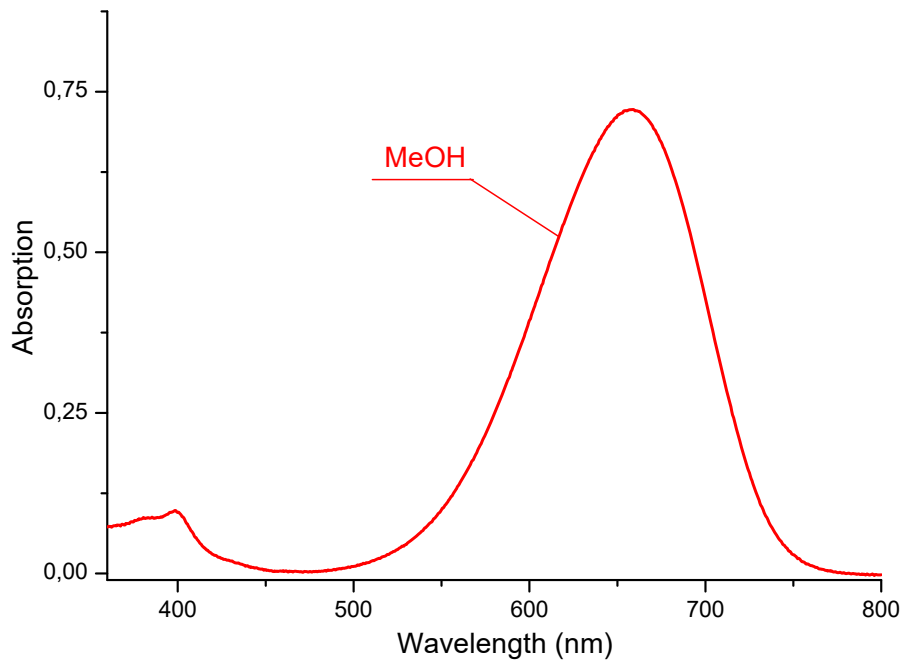


Absorption

Methanol			
659	nm	69400	M-1 cm-1
<hr/>			
	nm		M-1 cm-1
<hr/>			
Emission			
nm			

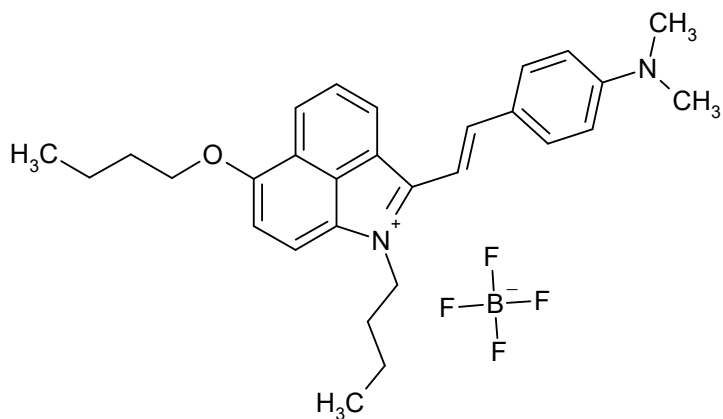
C₂₅H₂₇BF₄N₂

442.3119



S01402

CAS #



Absorption

Methanol

665

nm

66000

M-1 cm-1

nm

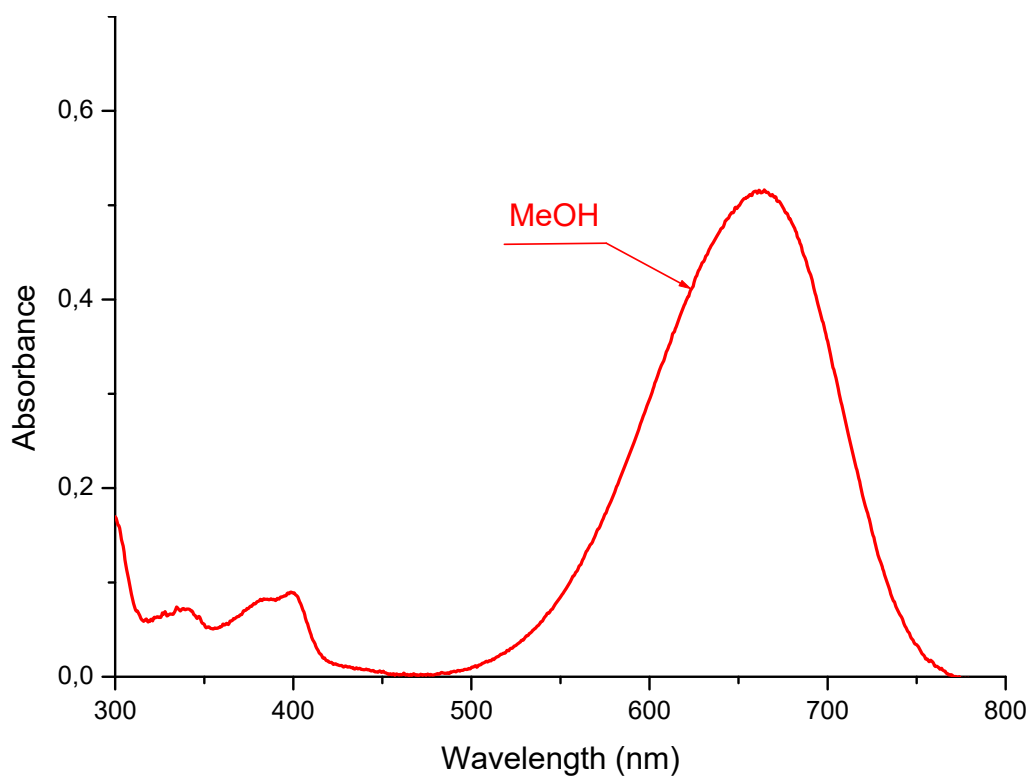
M-1 cm-1

Emission

nm

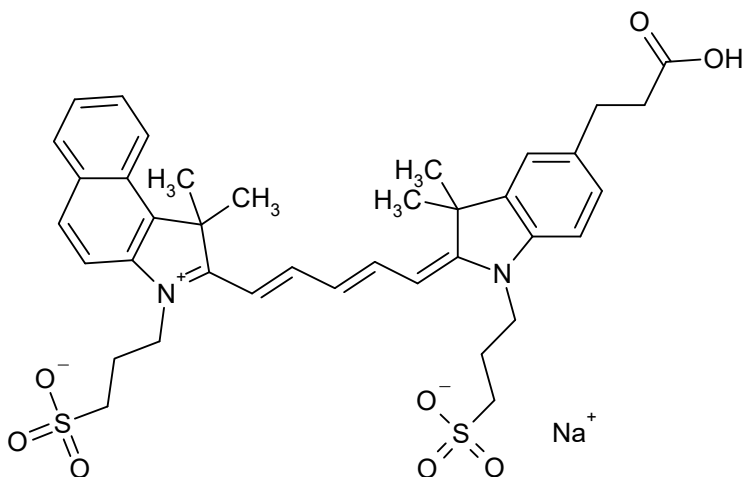
C₂₉H₃₅BF₄N₂O

514.4197



S03869

CAS #



Absorption

	Methanol	
666	nm	218000 M-1 cm-1

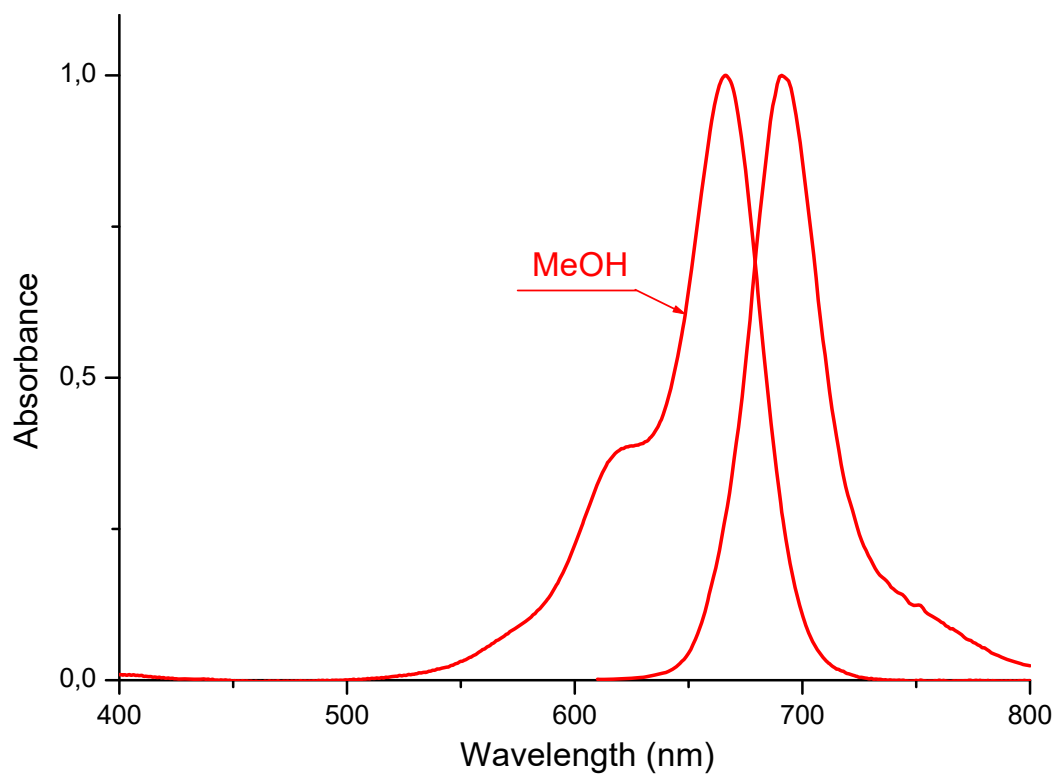
	nm	M-1 cm-1
--	----	----------

Emission

	Methanol	
691	nm	

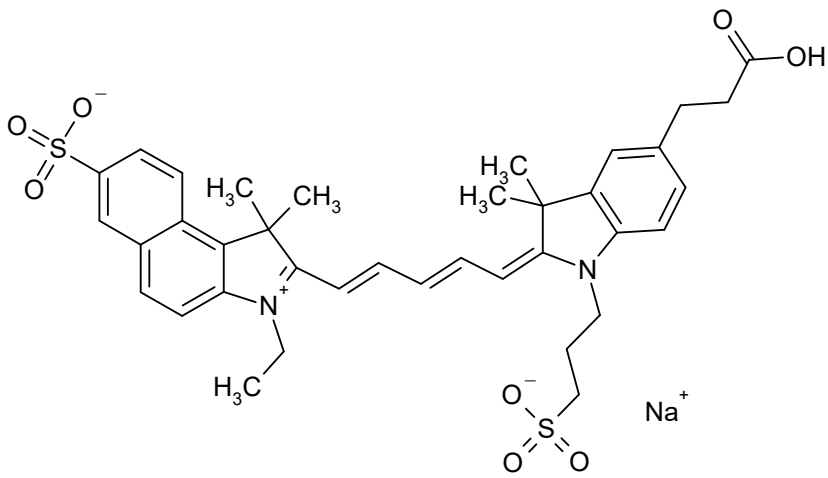
C₃₈H₄₃N₂NaO₈S₂

742.8928



S03906

CAS #



Absorption

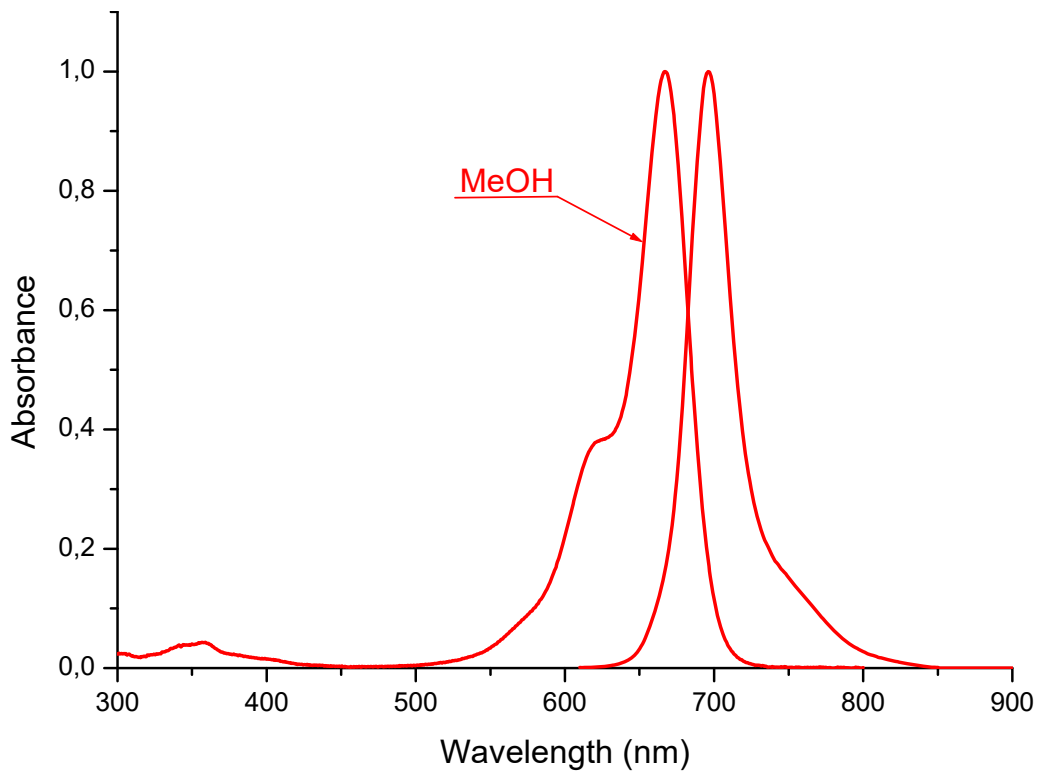
	Methanol	
667	nm	230000 M-1 cm-1

Emission

	Methanol	
	696	nm

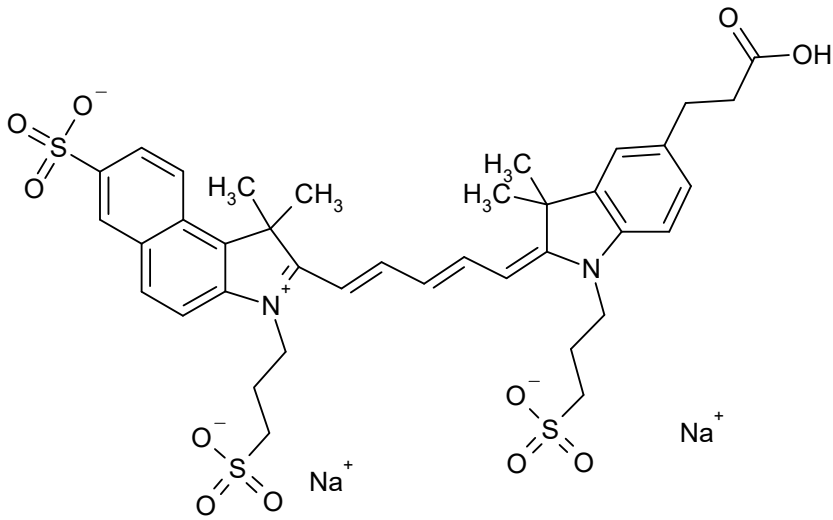
C₃₇H₄₁N₂NaO₈S₂

728.8657



S03912

CAS #



Absorption

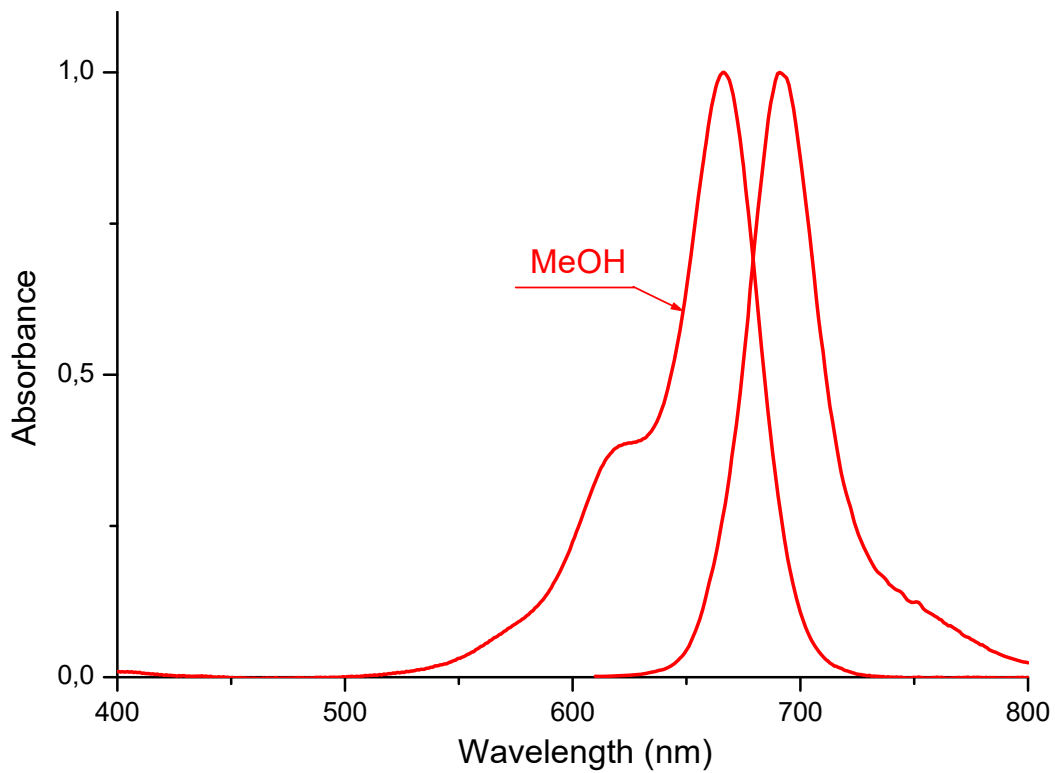
	Methanol	
668	nm	220000 M-1 cm-1

Emission

	Methanol	
	695	nm M-1 cm-1

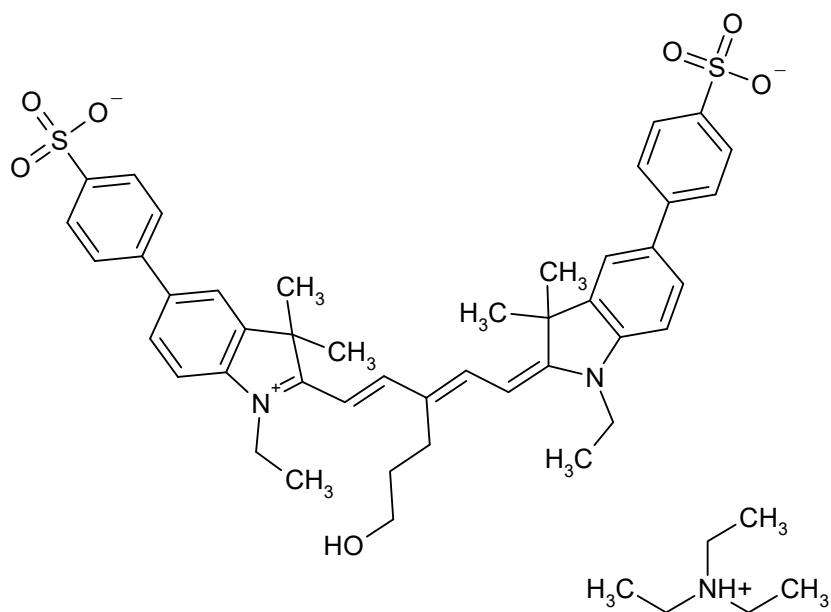
$C_{38}H_{42}N_2Na_2O_{11}S_3$

844.9368



S03992

CAS #



Absorption

Ethanol
668 nm 237000 M-1 cm-1

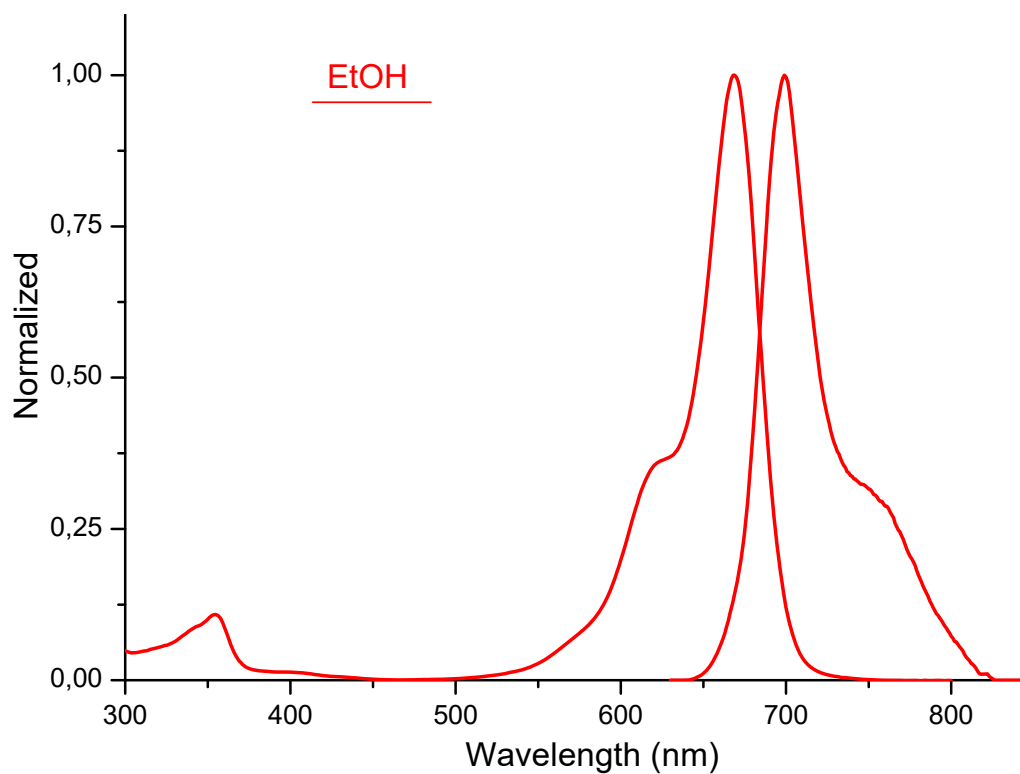
nm M-1 cm-1

Emission

Ethanol
699 nm

C₅₁H₆₃N₂O₇S₂

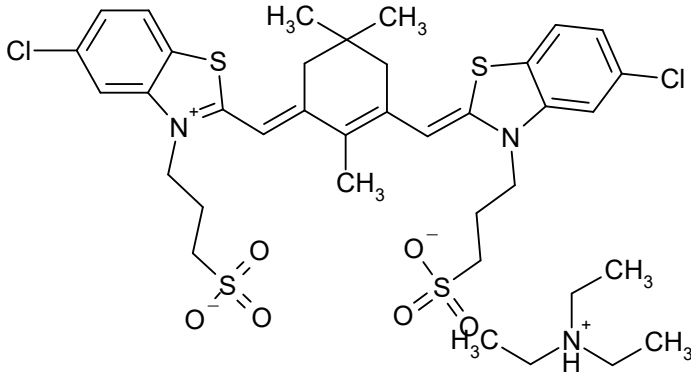
880.2080



S01318

CAS #
202135-09-9

U-3



Absorption

		Ethanol	
670	nm	270600	M-1 cm-1

Water

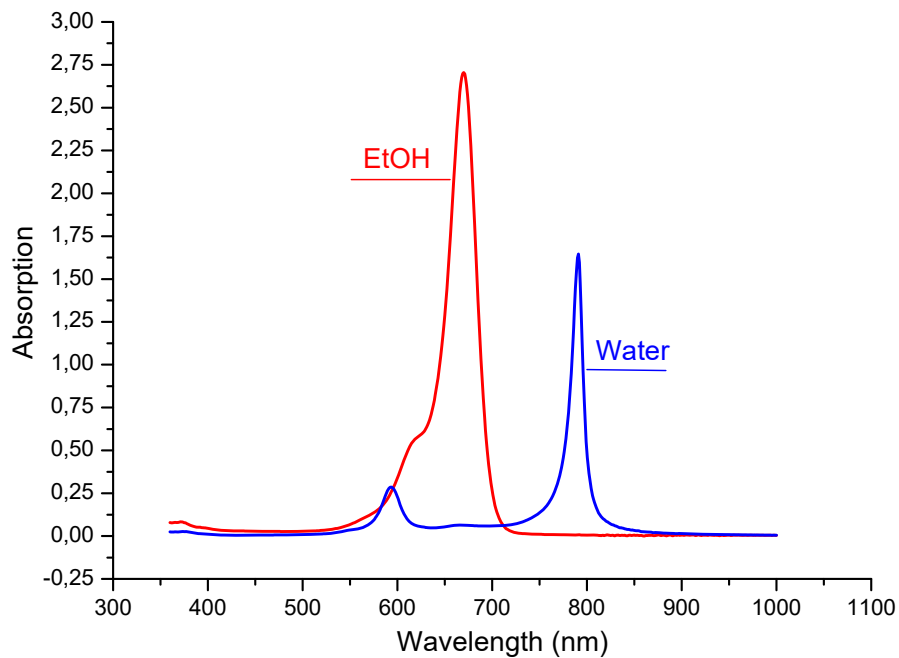
791	nm		M-1 cm-1
------------	----	--	----------

Emission

nm

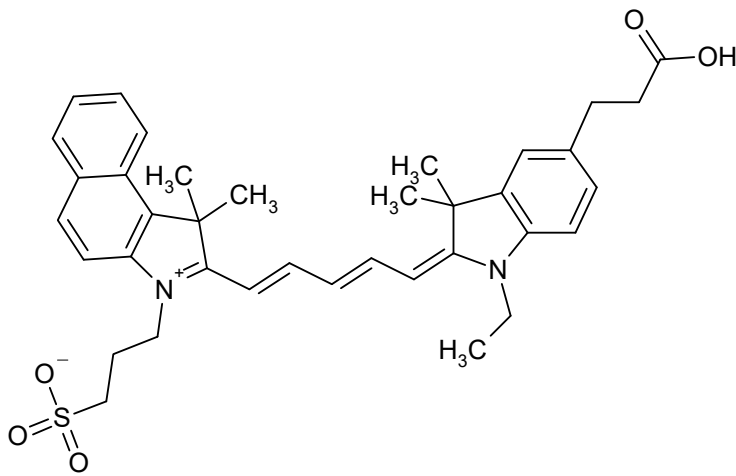
$C_{37}H_{49}Cl_2N_3O_6S_4$

830.9816



S03828

CAS #



Absorption

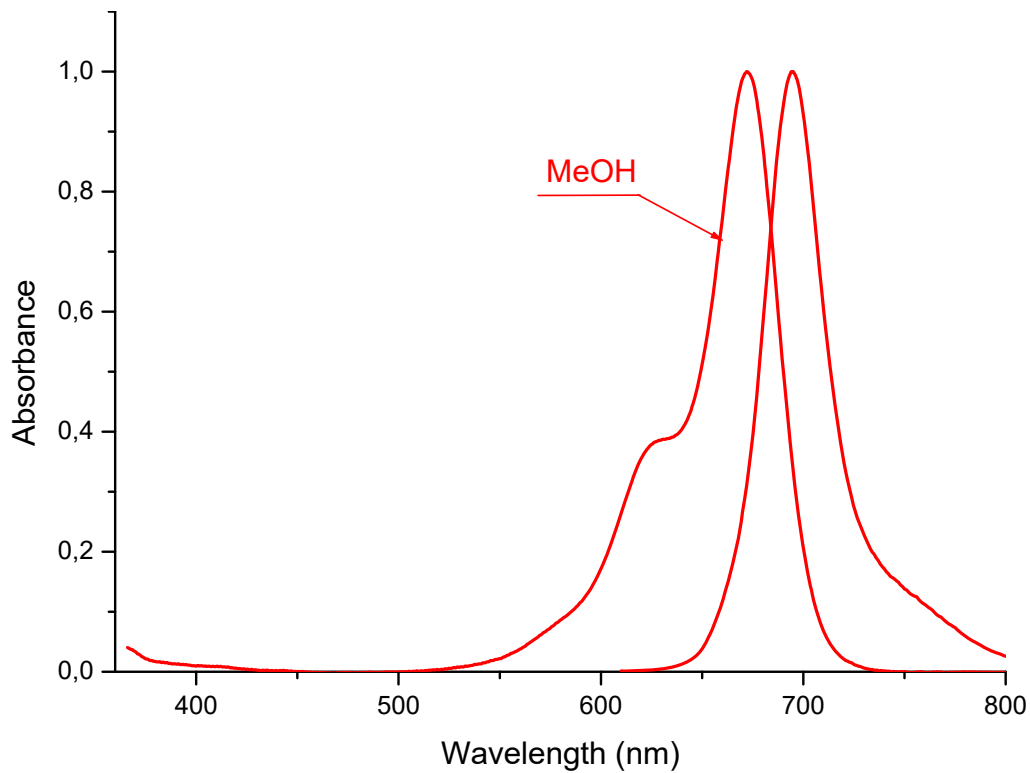
	Methanol	
672	nm	186700 M-1 cm-1

Emission

	Methanol	
695	nm	M-1 cm-1

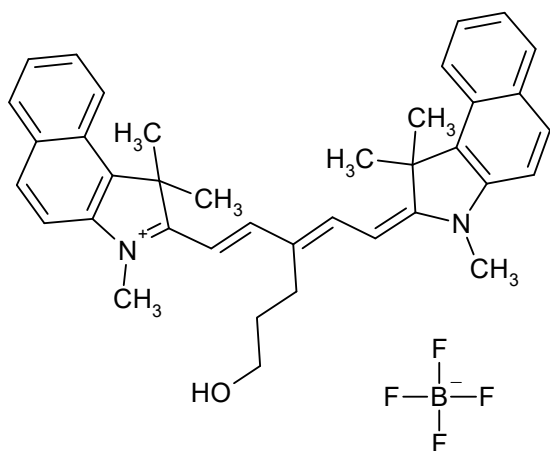
C₃₇H₄₂N₂O₅S

626.8217



S03990

CAS #



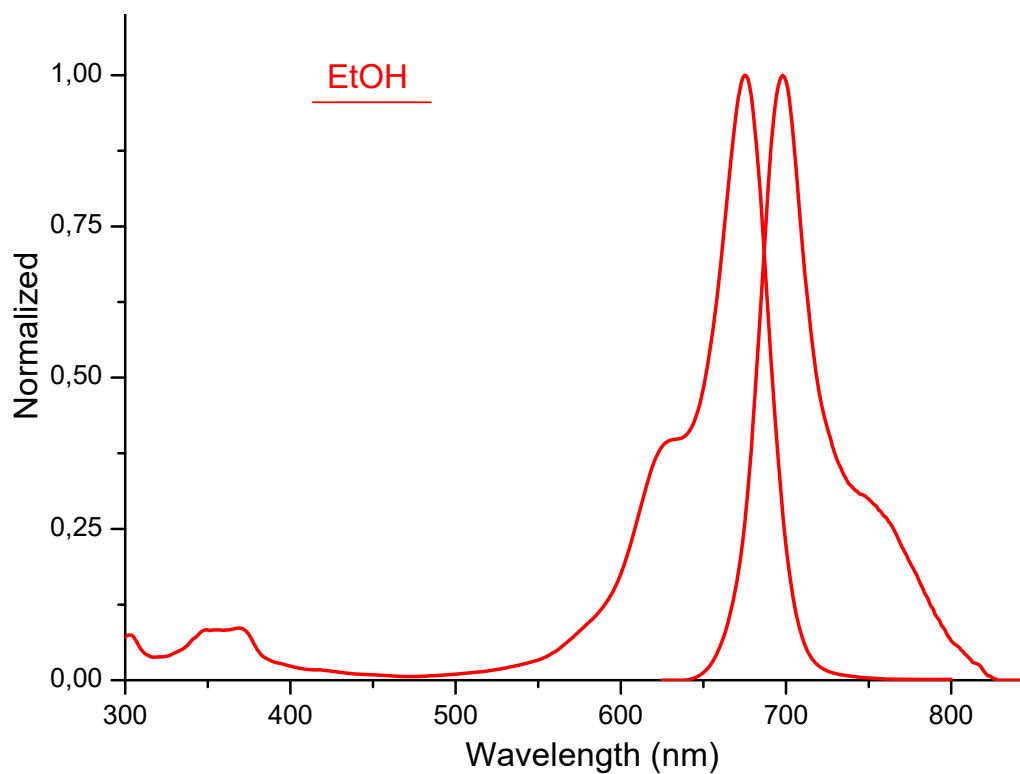
Absorption

	Ethanol	
675	nm	210000 M-1 cm-1

	nm	M-1 cm-1
<i>Emission</i>	Ethanol	
	698 nm	

C₃₈H₄₁BF₄N₂O

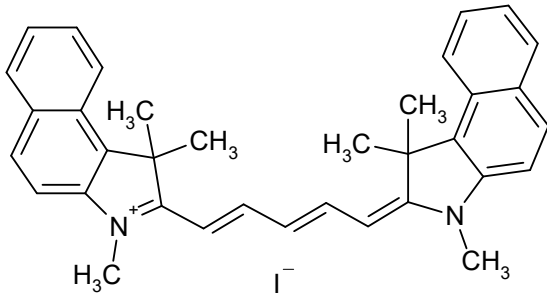
628.5679



S00258

CAS #
56289-64-6

IR-676 iodide



Absorption

Methanol			
676	nm	205000	M-1 cm-1

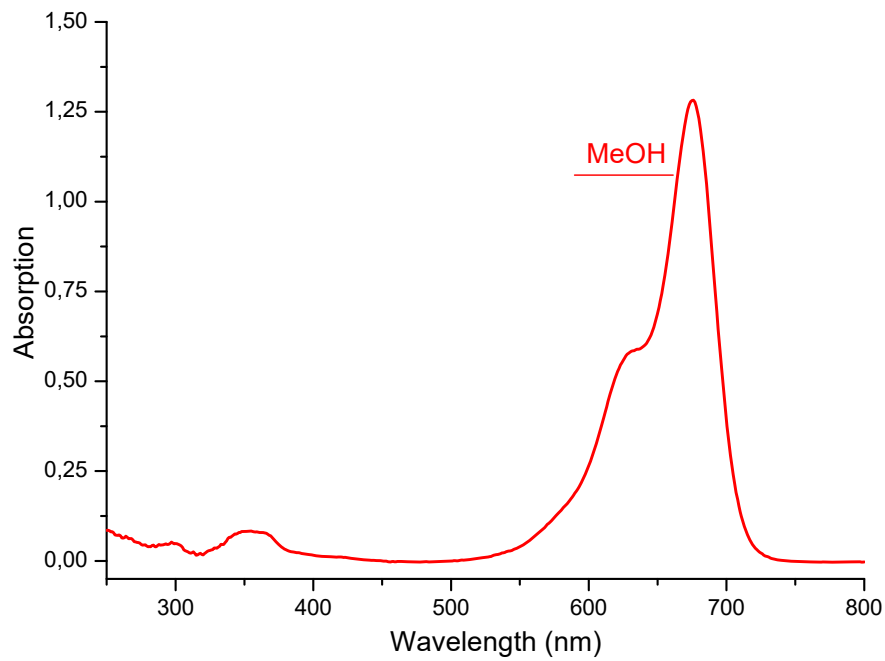
	nm		M-1 cm-1
--	----	--	----------

Emission

nm

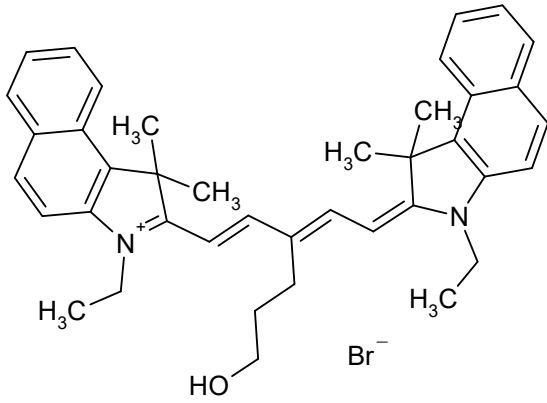
$C_{35}H_{35}IN_2$

610.5870



S03994

CAS #



Absorption

	Ethanol	
677	nm	214500 M-1 cm-1

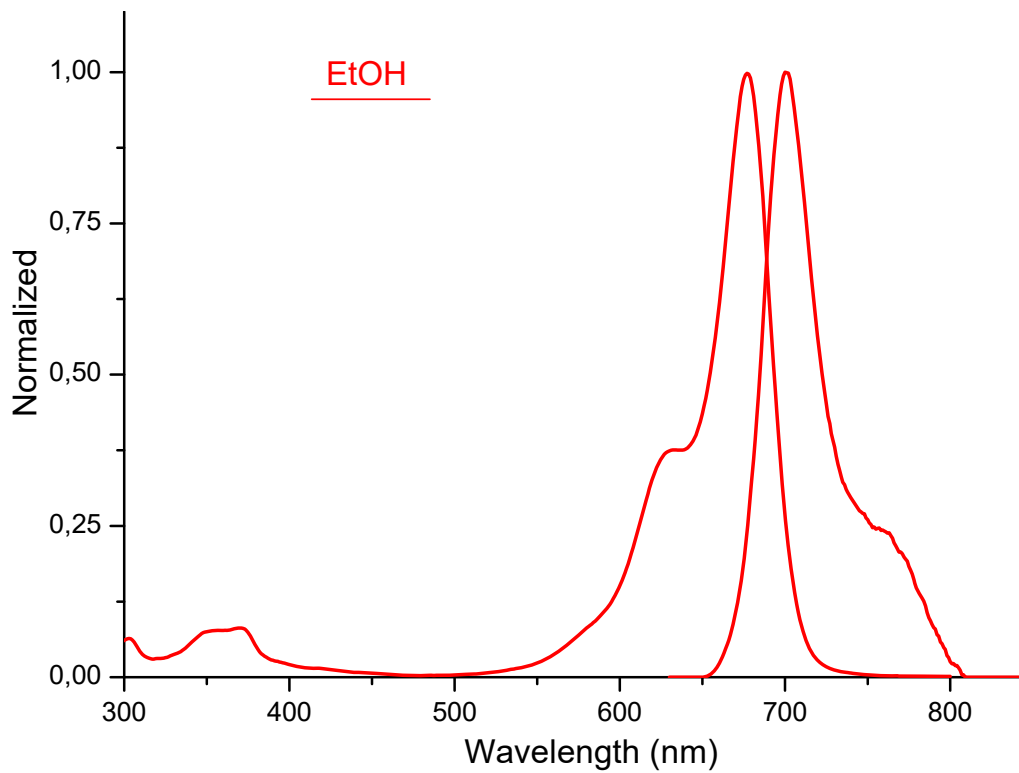
nm M-1 cm-1

Emission

	Ethanol
700	nm

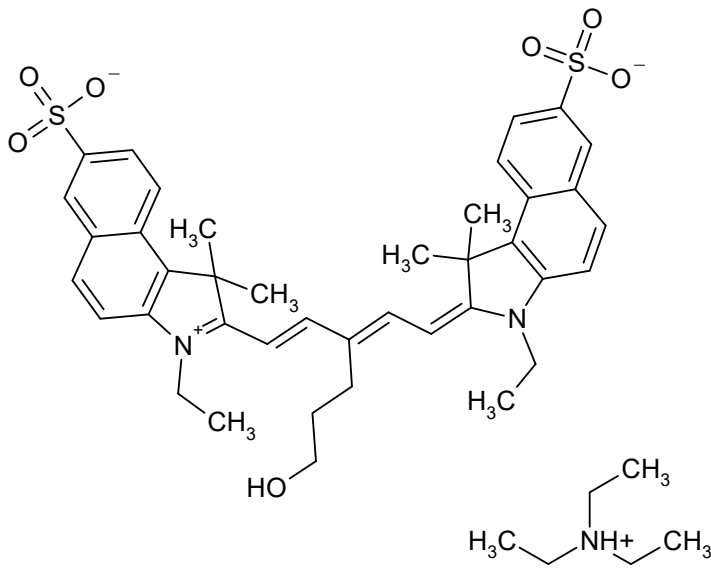
C₄₀H₄₅BrN₂O

649.7215



S03991

CAS #



Absorption

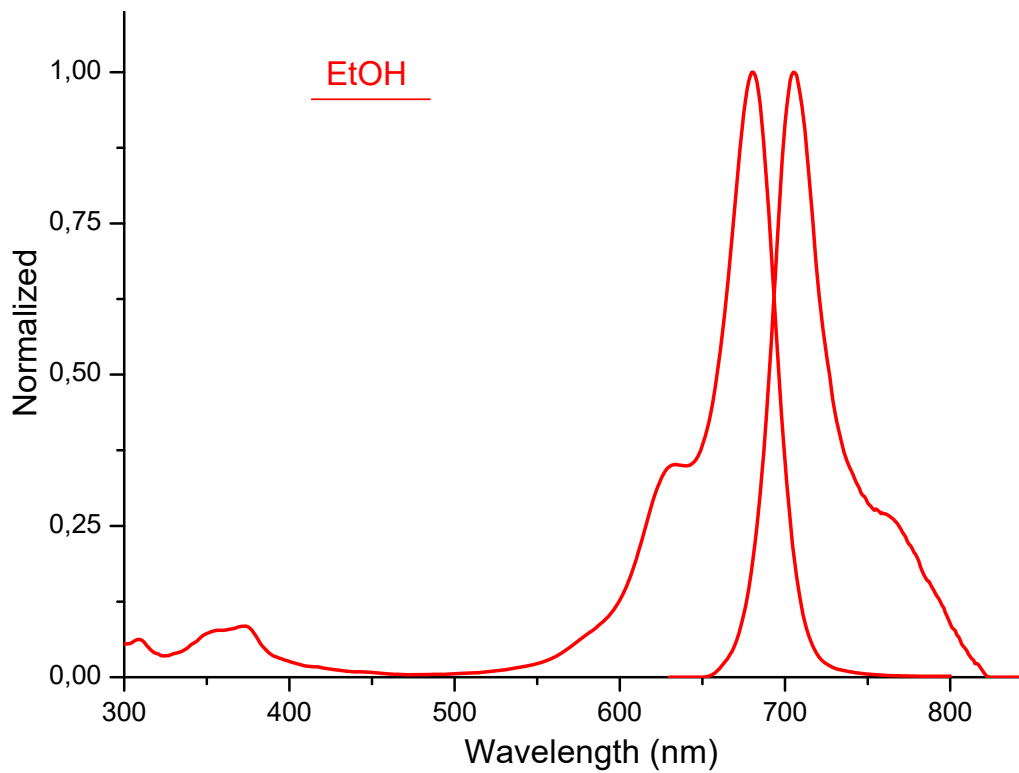
	Ethanol	
681	nm	266000 M-1 cm-1

	nm	M-1 cm-1
<i>Emission</i>		

Ethanol
705 nm

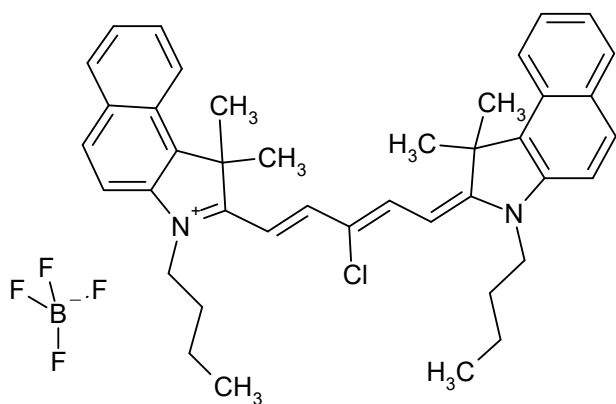
C₄₇H₅₉N₂O₇S₂

828.1315



S03914

CAS #



Absorption

Methanol

682 nm 218500 M-1 cm-1

nm

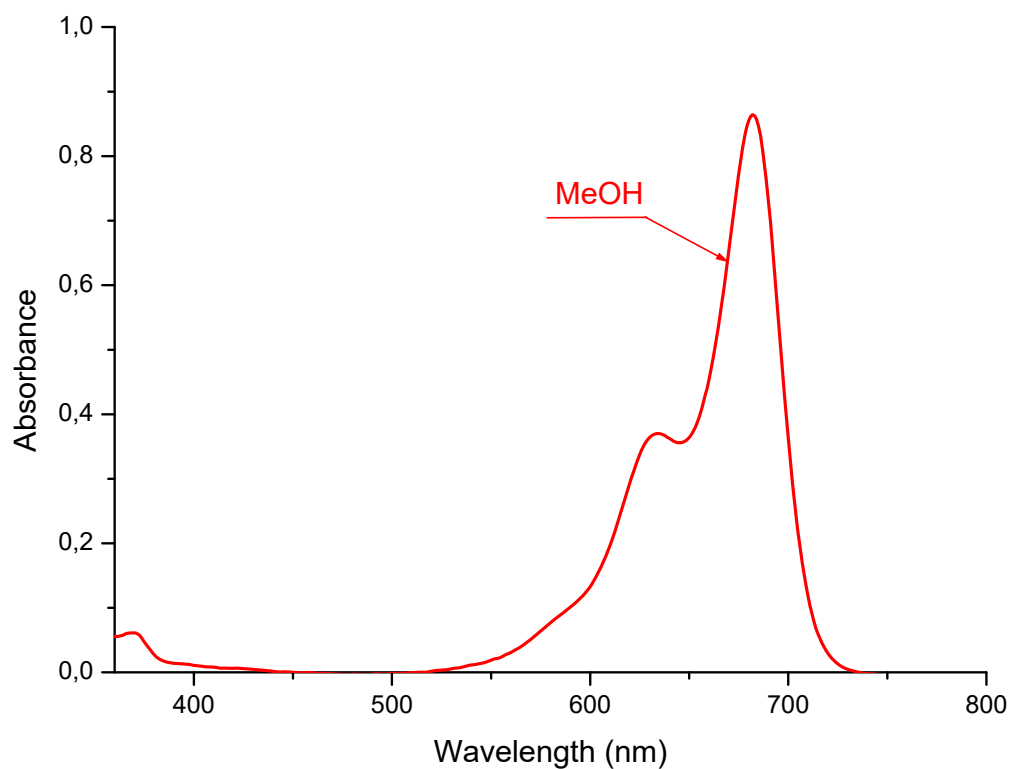
M-1 cm-1

Emission

nm

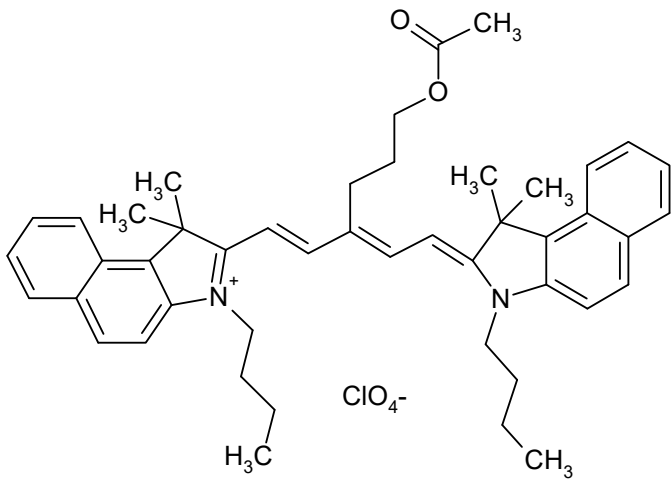
$C_{41}H_{46}BClF_4N_2$

689.0948



S01977

CAS #



Absorption

Methylene chloride

685 nm 291800 M-1 cm-1

Methanol

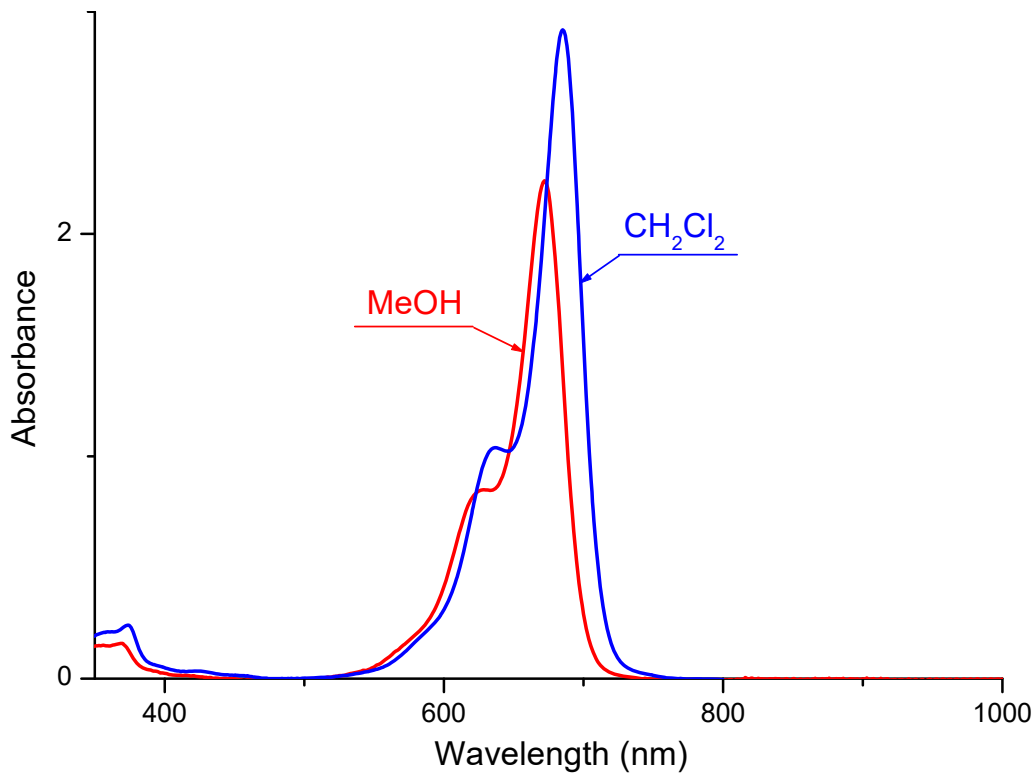
673 nm 224000 M-1 cm-1

Emission

nm

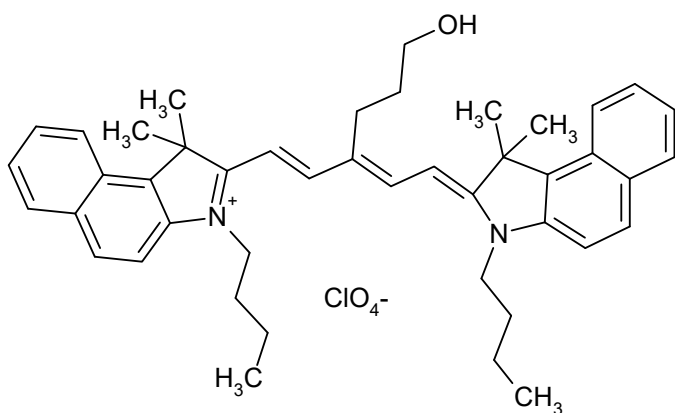
C₄₇H₅₉N₂O₂

684.0065



S01976

CAS #



Absorption

Methylene chloride

689 nm 228000 M-1 cm-1

Methanol

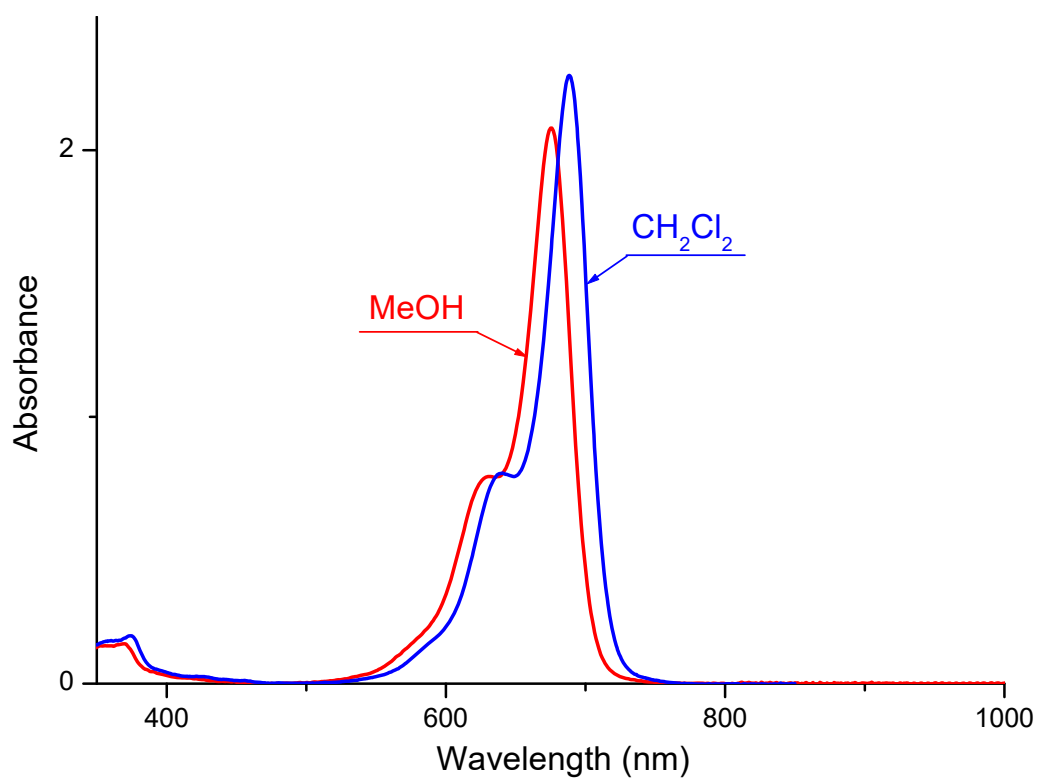
677 nm 208300 M-1 cm-1

Emission

nm

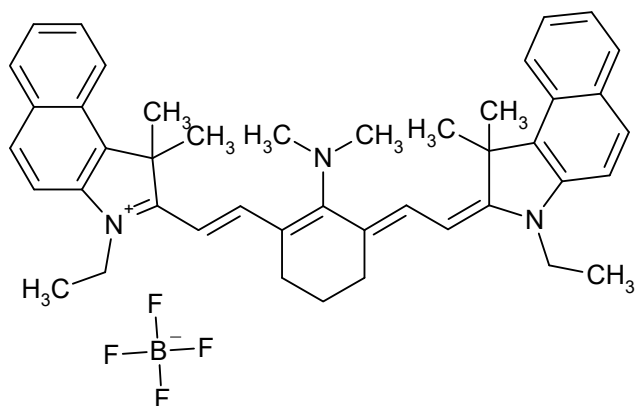
$\text{C}_{45}\text{H}_{57}\text{N}_2\text{O}$

641.9688



S04161

CAS #



Absorption

Methanol			
690	nm	92000	M-1 cm-1

Methylene chloride			
705	nm	112000	M-1 cm-1

Emission

Methanol	
825	nm

$C_{44}H_{50}BF_4N_3$

707.7138

